

# DGHO Jahrestagung 2017

Stuttgart 29.09.-03.-10.

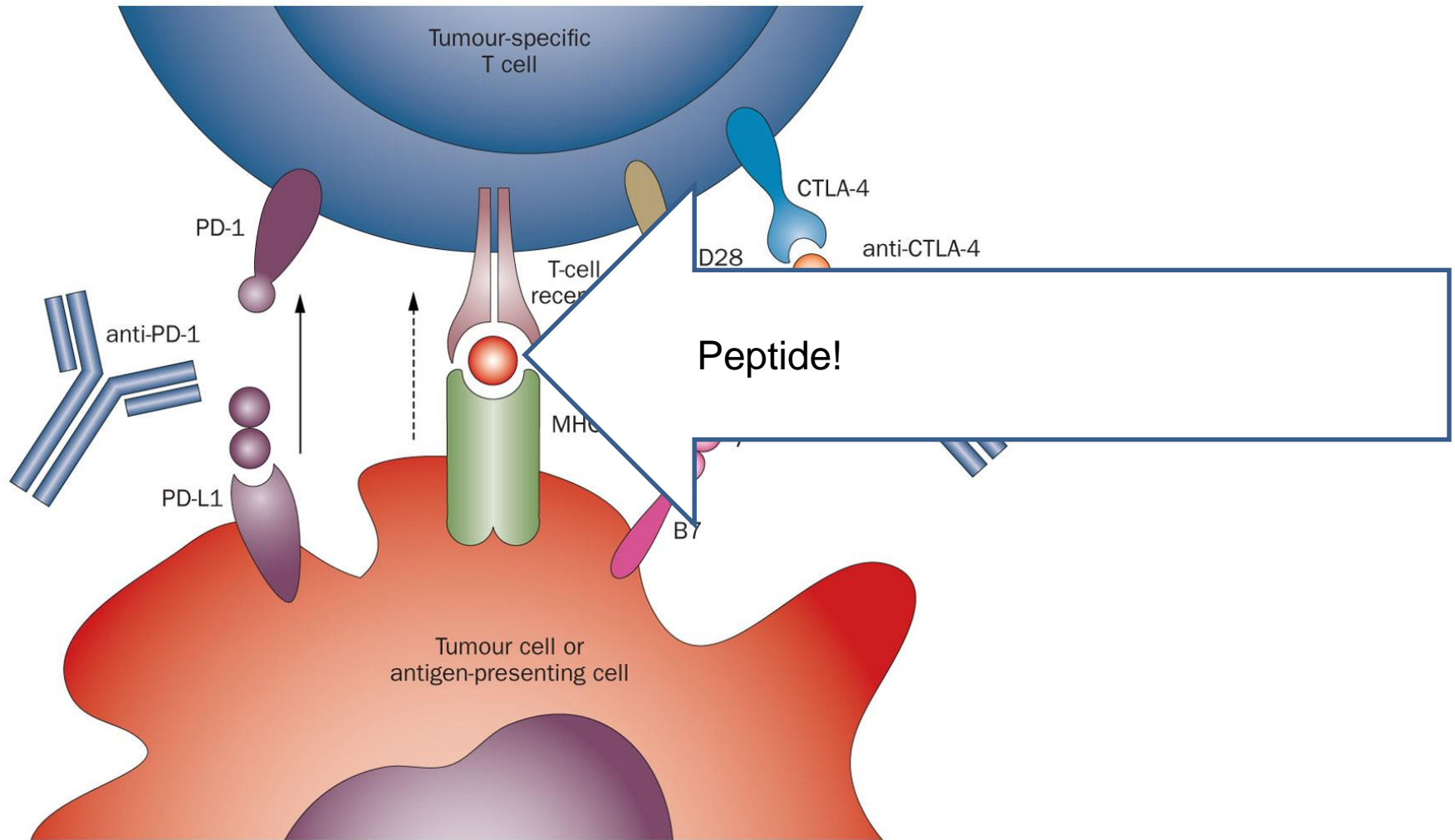
## Tumorvakzinierung: Aktueller Stand

## Cancer vaccination: Present stage

**Hans-Georg Rammensee, Universität Tübingen**



# Immunotherapy with checkpoint inhibitors

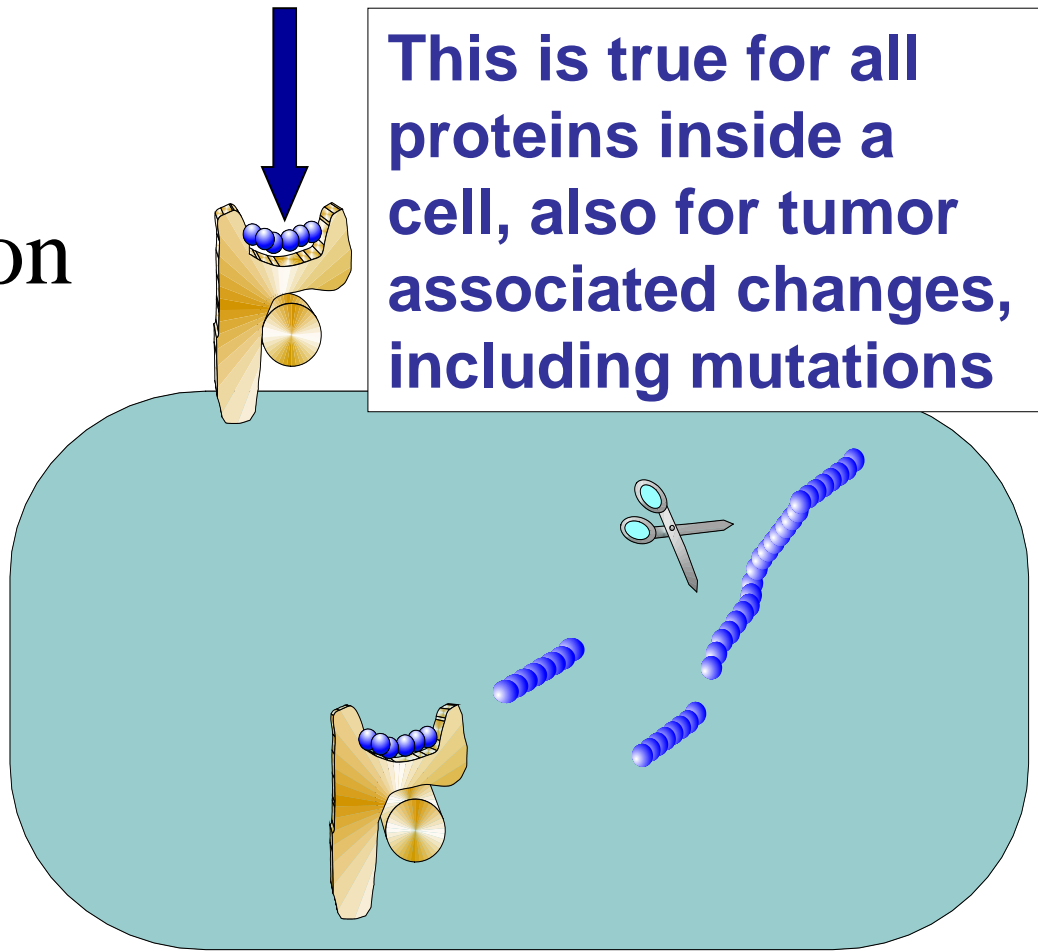


this can be recognized by T cells

# Antigen presentation by HLA molecule

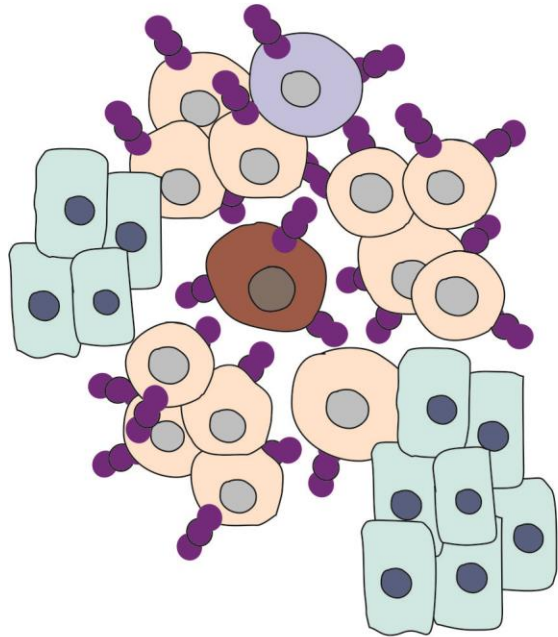
**This is true for all  
proteins inside a  
cell, also for tumor  
associated changes,  
including mutations**

# Antigen processing



3 categories of tumor antigens:

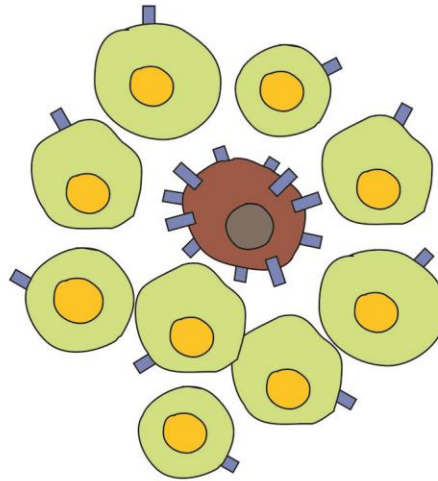
tissue specific  
("differentiation antigen")



e.g. Provenge

*Limited to few cancer entities  
Well established for  
antibodies (eg., Rituximab)  
Popular targets for CARs*

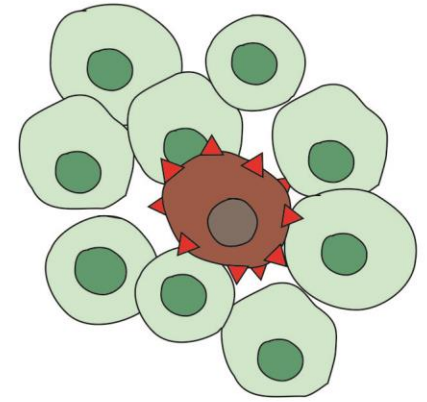
tumor associated  
germline antigens



eg., NY-ESO1,  
MUC1, IMA 901, ....

*We know plenty of such antigens;  
immune responses tend to be weak  
with the immunomodulation measures  
used so far*

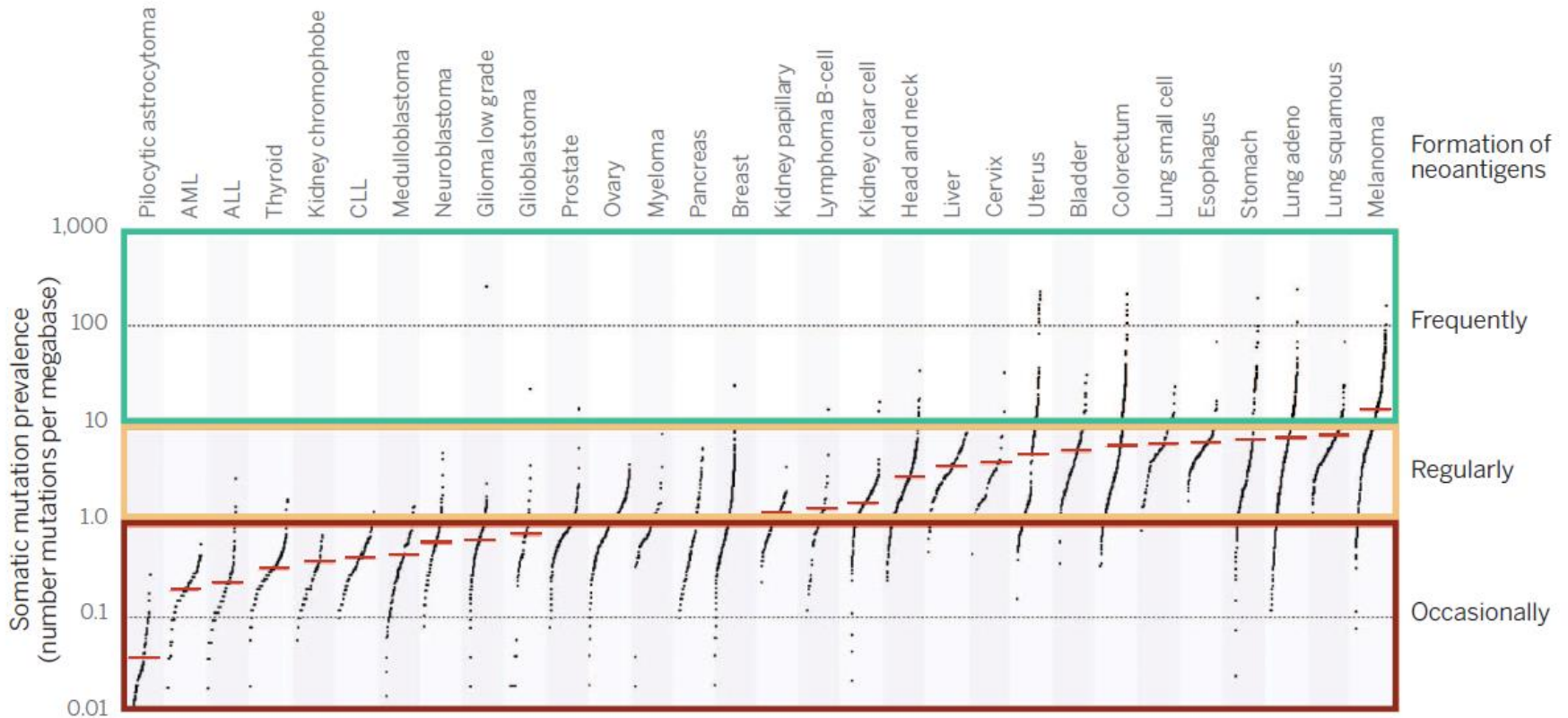
mutated or viral



for mutated antigens  
only possible in  
individualized approach

*Are mutated  
peptides  
presented in all  
human cancer  
types?*

Thus: the majority of cancer patients will not benefit from checkpoint inhibition (alone)



**Fig. 2. Estimate of the neoantigen repertoire in human cancer.** Data depict the number of somatic mutations in individual tumors. Categories on the right indicate current estimates of the likelihood of neoantigen formation in different tumor types. Adapted from (50). It is possible that the immune system in melanoma patients picks up on only a fraction of the available neoantigen repertoire, in which case the current analysis will be an underestimate. A value of 10 somatic mutations per Mb of coding DNA corresponds to ~150 nonsynonymous mutations within expressed genes.

Thus: the majority of cancer patients will not benefit from checkpoint inhibition (alone)

**Is therapeutic vaccination an option  
for this majority?**

So far no real successful therapeutic vaccination in phase III trials.

Neither with peptides nor with anything else.

In contrast, there is a large number of phase II or earlier clinical trials, and case reports, reporting therapeutic vaccination with tumor antigens

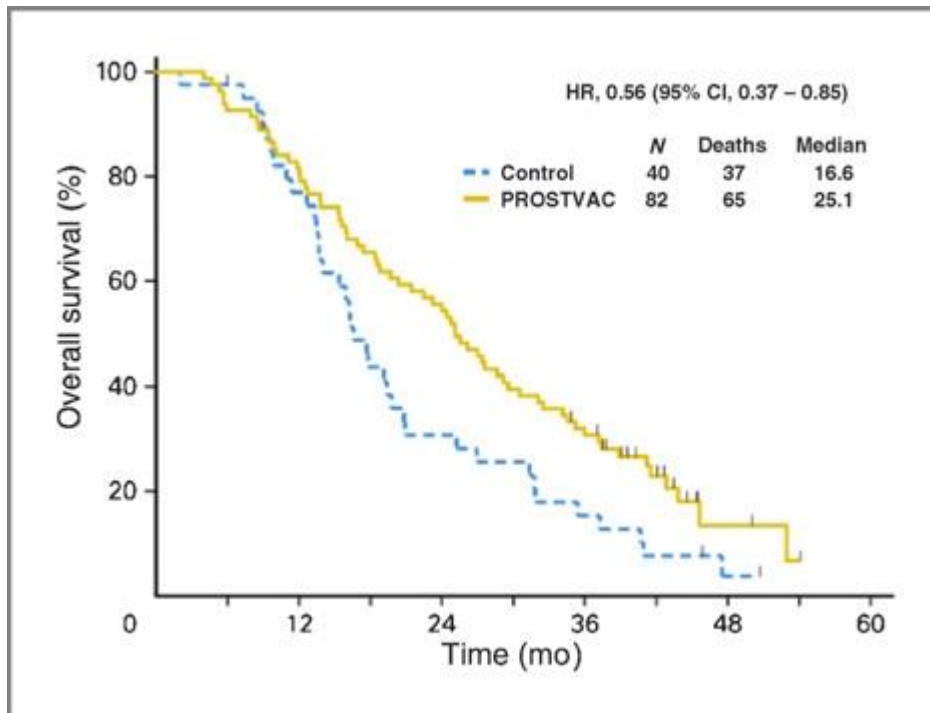
- viral, mutated, tumor-associated or tissue specific –

leading to antigen specific T cell responses associated with clinical benefit.

# **Some selected examples for therapeutic vaccination approaches**



cf. Provenge



## Immune Impact Induced by PROSTVAC (PSA-TRICOM), a Therapeutic Vaccine for Prostate Cancer

James L. Gulley<sup>1</sup>, Ravi A. Madan<sup>1</sup>, Kwong Y. Tsang<sup>1</sup>, Caroline Jochems<sup>1</sup>, Jennifer L. Marté<sup>1</sup>, Benedetto Farsaci<sup>1</sup>, Jo A. Tucker<sup>1</sup>, James W. Hodge<sup>1</sup>, David J. Liewehr<sup>2</sup>, Seth M. Steinberg<sup>2</sup>, Christopher R. Heery<sup>1</sup>, and Jeffrey Schlom<sup>1</sup>

# mRNA-Vaccination in prostate carcinoma patients / CureVac

Kübler *et al.* *Journal for ImmunoTherapy of Cancer* (2015) 3:26  
DOI 10.1186/s40425-015-0068-y



RESEARCH ARTICLE

Open Access



## Self-adjuvanted mRNA vaccination in advanced prostate cancer patients: a first-in-man phase I/IIa study

Hubert Kübler<sup>1†</sup>, Birgit Scheel<sup>2\*†</sup>, Ulrike Gnad-Vogt<sup>2</sup>, Kurt Miller<sup>3</sup>, Wolfgang Schultze-Seemann<sup>4</sup>, Frank vom Dorp<sup>5</sup>, Giorgio Parmiani<sup>6</sup>, Christian Hampel<sup>7</sup>, Steffen Wedel<sup>8</sup>, Lutz Trojan<sup>9</sup>, Dieter Jocham<sup>10</sup>, Tobias Maurer<sup>1</sup>, Gerd Rippin<sup>11</sup>, Mariola Fotin-Mleczek<sup>2</sup>, Florian von der Mülbe<sup>2</sup>, Jochen Probst<sup>2</sup>, Ingmar Hoerr<sup>2</sup>, Karl-Josef Kallen<sup>2</sup>, Thomas Lander<sup>2</sup> and Arnulf Stenzl<sup>12</sup>

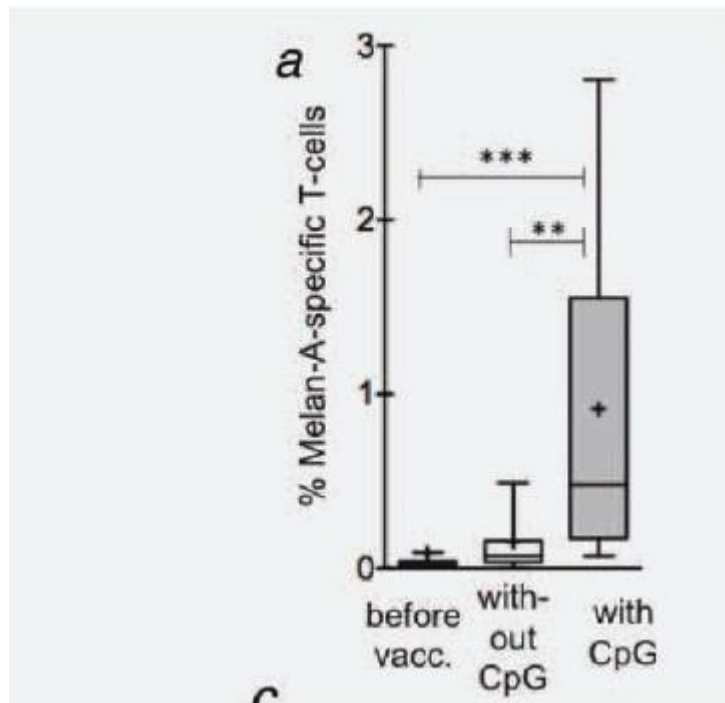


## Vaccination-induced functional competence of circulating human tumor-specific CD8 T-cells

Petra Baumgaertner<sup>1</sup>, Camilla Jandus<sup>1</sup>, Jean-Paul Rivals<sup>2</sup>, Laurent Derré<sup>1</sup>, Tanja Lövgren<sup>1</sup>, Lukas Baitsch<sup>1</sup>, Philippe Guillaume<sup>1</sup>, Immanuel F. Luescher<sup>1</sup>, Gregoire Berthod<sup>2</sup>, Maurice Matter<sup>2</sup>, Nathalie Rufer<sup>1</sup>, Olivier Michielin<sup>1,2</sup> and Daniel E. Speiser<sup>1</sup>

<sup>1</sup>Clinical Tumor Immune-Biology Unit, Ludwig Center for Cancer Research of the University of Lausanne, Switzerland

<sup>2</sup>University Hospital Center and University of Lausanne (CHUV), Lausanne, Switzerland



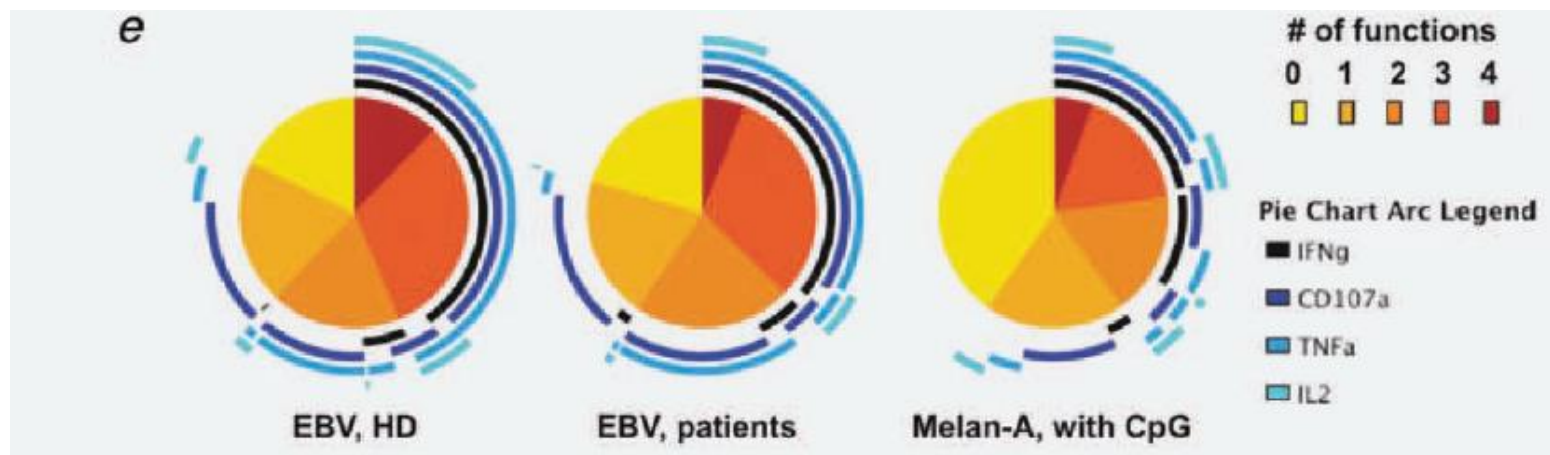
vaccination of peptide + CpG  
in IFA (Montanide ISA51)

## Vaccination-induced functional competence of circulating human tumor-specific CD8 T-cells

Petra Baumgaertner<sup>1</sup>, Camilla Jandus<sup>1</sup>, Jean-Paul Rivals<sup>2</sup>, Laurent Derré<sup>1</sup>, Tanja Lövgren<sup>1</sup>, Lukas Baitsch<sup>1</sup>, Philippe Guillaume<sup>1</sup>, Immanuel F. Luescher<sup>1</sup>, Gregoire Berthod<sup>2</sup>, Maurice Matter<sup>2</sup>, Nathalie Rufer<sup>1</sup>, Olivier Michielin<sup>1,2</sup> and Daniel E. Speiser<sup>1</sup>

<sup>1</sup>Clinical Tumor Immune-Biology Unit, Ludwig Center for Cancer Research of the University of Lausanne, Switzerland

<sup>2</sup>University Hospital Center and University of Lausanne (CHUV), Lausanne, Switzerland




# IMA901 phase 2 results, multi-peptide vaccination in RCC



Peptides i.d., adjuvans: GM-CSF.

T cell responses were weak and rare only seen after 12 day restimulation in vitro even with viral peptides

- Patients who have received Cy and had T cell responses to IMA901 showed longer survival



## An open-label, randomized, phase 3 study investigating IMA901 multi-peptide cancer vaccine in combination with sunitinib vs. sunitinib alone as first-line therapy for metastatic RCC

**B. Rini**<sup>1</sup>, A. Stenzl<sup>2</sup>, R. Zdrojowy<sup>3</sup>, M. Kogan<sup>4</sup>, M. Shkolnik<sup>5</sup>, S. Oudard<sup>6</sup>,  
S. Weikert<sup>7</sup>, S. Bracarda<sup>8</sup>, S. Crabb<sup>9</sup>, J. Bedke<sup>2</sup>, J. Ludwig<sup>10</sup>, D. Maurer<sup>10</sup>, R.  
Mendrzyk<sup>10</sup>, A. Mahr<sup>10</sup>, J. Fritsche<sup>10</sup>, T. Weinschenk<sup>10</sup>, H. Singh<sup>10</sup>,  
A. Kirner<sup>10</sup>, C. Reinhardt<sup>10</sup>, T. Eisen<sup>11</sup>

<sup>1</sup>Cleveland Clinic Taussig Cancer Center, Cleveland, USA; <sup>2</sup>University of Tuebingen, Tuebingen, Germany; <sup>3</sup>Wroclaw Medical University, Wroclaw, Poland; <sup>4</sup>Rostov State Medical University of Roszdrav, Rostov-on-Don, Russia; <sup>5</sup>Russian Scientific Center of Radiology and Surgery Technologies, St. Petersburg, Russia; <sup>6</sup>Hopital Europeen Georges Pompidou, Paris, France; <sup>7</sup>Vivantes Humboldt Clinic, Berlin, Germany; <sup>8</sup>Ospedale San Donato, Arezzo, Italy; <sup>9</sup>Southampton General Hospital, Southampton, UK; <sup>10</sup>Immatics biotechnologies GmbH, Tuebingen, Germany; <sup>11</sup>University of Cambridge, Cambridge, UK

General problem with most attempts of therapeutic vaccinations, in particular with multi-peptide vaccines:

Weak immune responses,  
unless combined with strong adjuvants

Strategy:

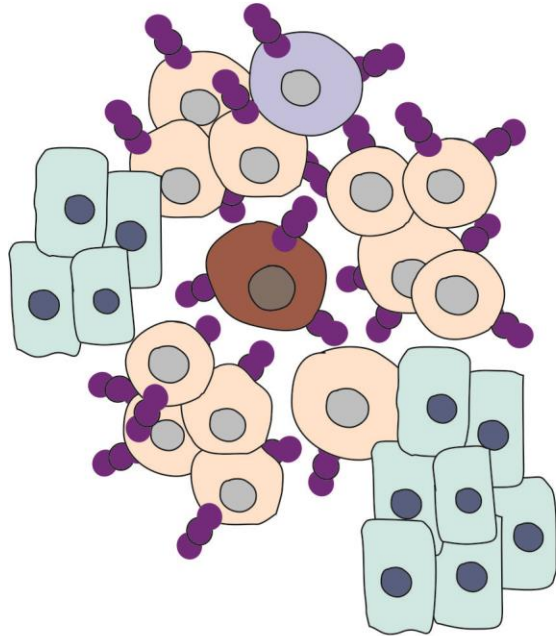
1. Identification of relevant tumor antigens
2. Efficient immune response by strongly adjuvanted vaccination

Identification of relevant tumor antigens



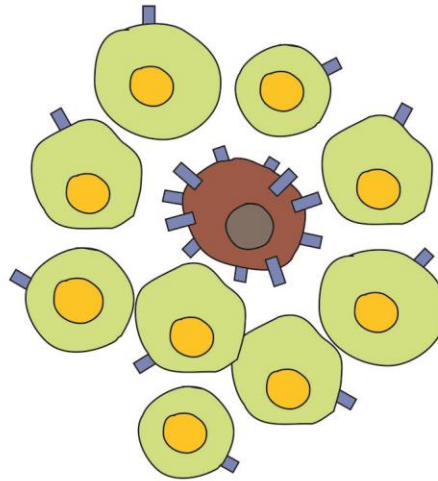
### 3 categories of tumor antigens:

tissue specific  
("differentiation antigen")



*eg., PSA, PSMA, CD19.  
Limited to few cancer entities  
Well established for  
antibodies (eg., CD19)  
Popular targets for CARs*

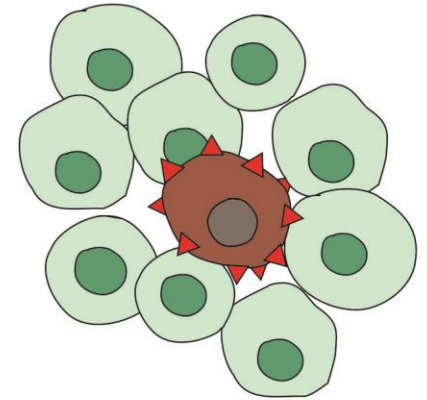
tumor associated  
germline antigens



*eg., NY-ESO1,  
MUC1, IMA 901, ....*

*We know plenty of such antigens;  
immune responses tend to be weak  
with the immunomodulation measures  
used so far*

mutated or viral

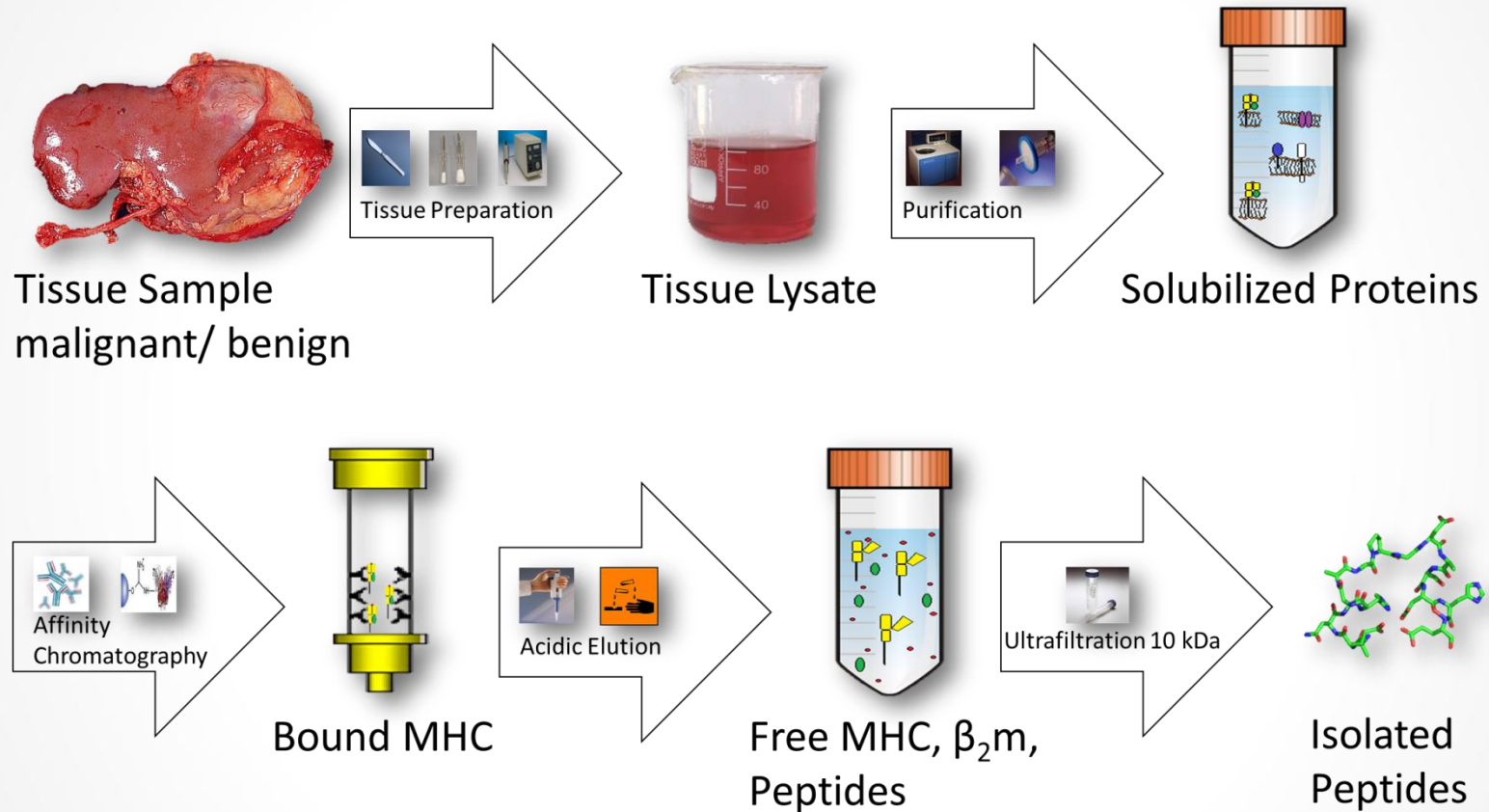


*for mutated antigens  
only possible in  
individualized approach*

*Are mutated  
peptides  
presented in all  
human cancer  
types?*



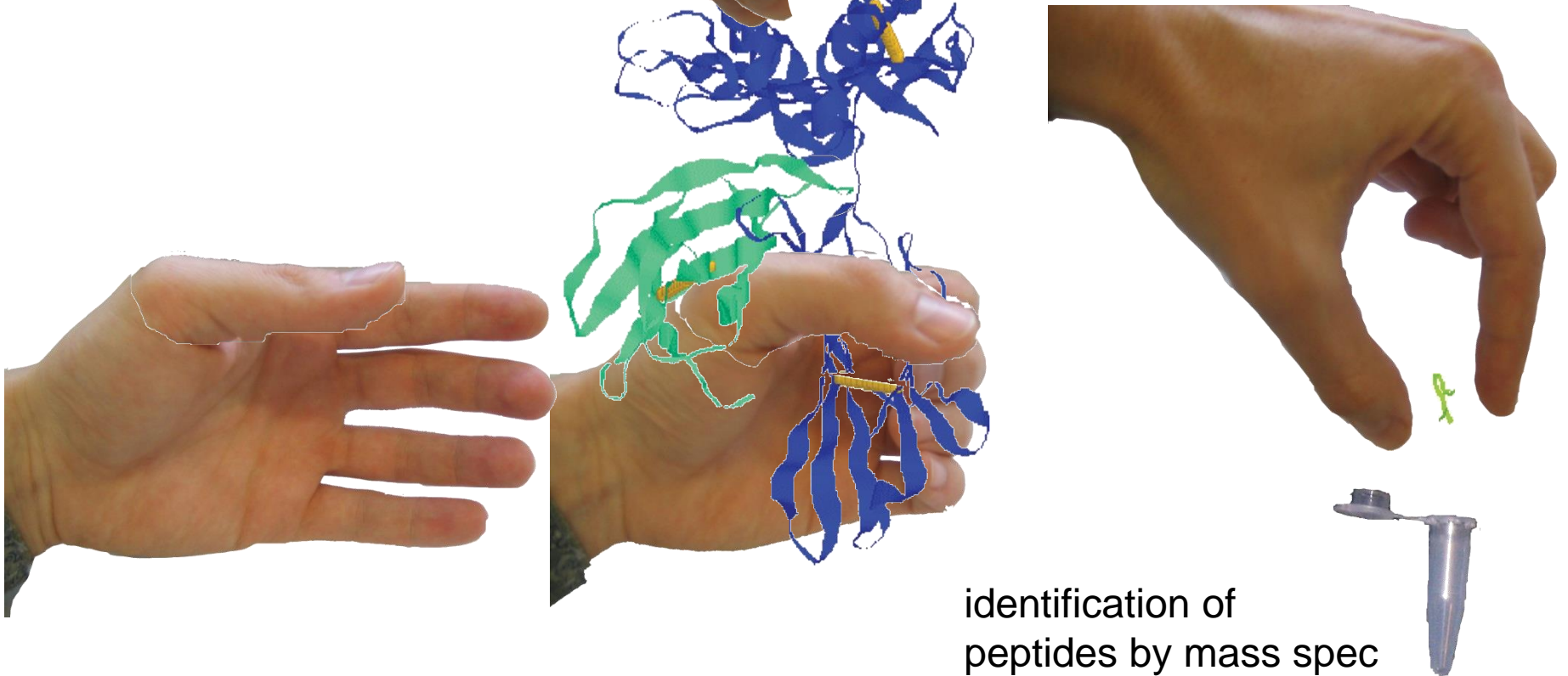
# Isolation of Naturally Presented HLA-Ligands



# Peptide preparation

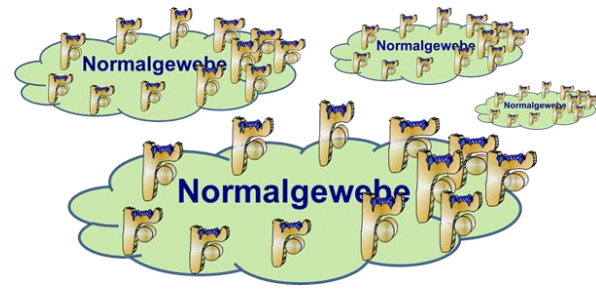
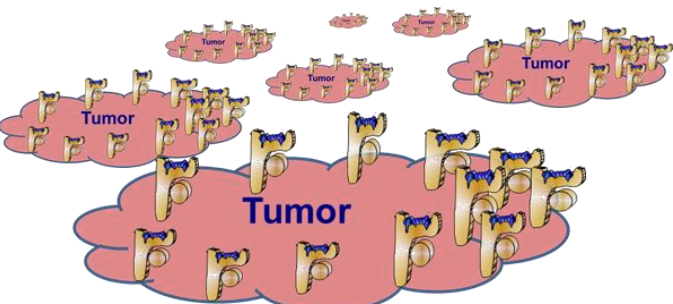
Andy Weinzierl

- Protein A affinity chromatography using W6/32-antibody
- elution with citrate buffer, pH 3



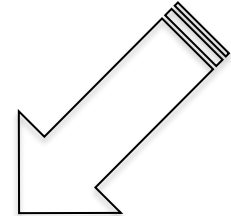
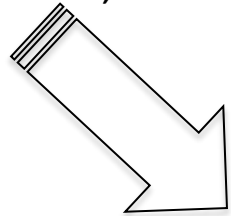
identification of peptides by mass spec

# HLA ligandome landscape discovery



n tumor samples of different entities  
(AML, CLL, CML, RCC, HCC, OvCa, Colon Ca, ...)

n normal tissue samples (kidney, liver, bone marrow, blood, colon, ...)



HLA-ligandome analysis



- 1.5 Mio HLA class I ligands
- 0.6 Mio HLA class II ligands
- ≈ 15.000 source proteins

# Determination of the HLA ligandome of normal tissues (from autopsies)





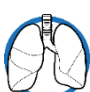










## Current sample overview



Marian Neidert

- Sample acquisition in Zürich
- 14 donors
- up to 22 organs per donor

- Samples analyzed so far:
  - ⇒ 810 runs
  - ⇒ 68,845 unique class I peptides
  - ⇒ 103,600 unique class II peptides

|   |          |   |   |                 |        |   |   |                  |
|---|----------|---|---|-----------------|--------|---|---|------------------|
|    | Bladder  | 4 |    | Aorta<br>Heart  | 3<br>4 |    | Spleen<br>Lymph Node 3                          | 3                |
|    | Mamma    | 1 |    | Trachea<br>Lung | 1<br>5 |    | Adrenal Gland<br>Kidney                         | 1<br>4           |
|    | Skin     | 2 |    | Liver           | 4      |    | Cerebellum<br>Brain                             | 5<br>5           |
|  | Pancreas | 1 |  | Testis          | 4      |  | Tongue<br>Esophagus<br>Small Intestine<br>Colon | 2<br>2<br>2<br>3 |
|  | Thyroid  | 6 |  | Muscle          | 3      |  | Bone Marrow                                     | 3                |

We found mutated MHC I presented peptides in mouse and human tumor cell lines, and in melanoma samples.

We rarely find mutated HLA I ligands in human tumor tissue of intermediate mutation rates (HCC, RCC, OvCa, Leukemias, Glioma)

# Neoantigens

from Toni Weinschenk, immatics

|  | Expressed Somatic<br>non-synonymous<br>mutations | Peptides with<br>mutation | Peptides % |             |
|--|--|---------------------------|------------|-------------|
| <b>Own MHC ligandomics data</b>                |  |                           |            |             |
| B16F10 melanoma                                | 563 [CASTLE 2012]                                | 1                         | 0.18%      |             |
| GL261 glioblastoma                             | 2003 [OKADA, pers. Comm.]                        | 1                         | 0.05%      |             |
| CT26 colorectal carcinoma                      | 1172 [CASTLE 2014]                               | 1                         | 0.09%      |             |
| MC-38 colon carcinoma [YADAV 2014]             | 1290   | 7                         | 0.54%      | <b>0.1%</b> |
| TRAMP-C1 [YADAV 2014]                          | 67   | 0                         | 0.00%      |             |
| <b>Published Proteomics studies</b>            |  |                           |            |             |
| SW480* colorectal line [WANG 2012]             | 3501   | 33                        | 0.94%      |             |
| RKO* colorectal line [WANG 2012]               | 3995   | 43                        | 1.08%      | <b>1%</b>   |
| TCGA** Breast cancer (n=105)<br>[MERTINS 2014] | 91.4   | 1.1                       | 1.20%      |             |



Yadav et al. 2014

## ARTICLE

Received 9 May 2016 | Accepted 30 Sep 2016 | Published 21 Nov 2016

DOI: [10.1038/ncomms13404](https://doi.org/10.1038/ncomms13404)

OPEN

# Direct identification of clinically relevant neoepitopes presented on native human melanoma tissue by mass spectrometry

Michal Bassani-Sternberg<sup>1,†,\*</sup>, Eva Bräunlein<sup>2,\*</sup>, Richard Klar<sup>2</sup>, Thomas Engleitner<sup>3,4</sup>, Pavel Sinitcyn<sup>1</sup>, Stefan Audehm<sup>2</sup>, Melanie Straub<sup>5</sup>, Julia Weber<sup>3,4</sup>, Julia Slotta-Huspenina<sup>5,6</sup>, Katja Specht<sup>5</sup>, Marc E. Martignoni<sup>7</sup>, Angelika Werner<sup>7</sup>, Rüdiger Hein<sup>8</sup>, Dirk H. Busch<sup>9</sup>, Christian Peschel<sup>2,4</sup>, Roland Rad<sup>3,4</sup>, Jürgen Cox<sup>1</sup>, Matthias Mann<sup>1,\*\*</sup> & Angela M. Krackhardt<sup>2,4,\*\*</sup>

5 patients

>1.000 nonsynonymous mutations per tumor

11 mutated neoantigens found by MS

8, 2, or 1 per patient

4 out of 11 immunogenic



# An immunogenic personal neoantigen vaccine for patients with melanoma

Patrick A. Ott<sup>1,2,3\*</sup>, Zhuting Hu<sup>1\*</sup>, Derin B. Keskin<sup>1,3,4</sup>, Sachet A. Shukla<sup>1,4</sup>, Jing Sun<sup>1</sup>, David J. Bozym<sup>1</sup>, Wandu Zhang<sup>1</sup>, Adrienne Luoma<sup>5</sup>, Anita Giobbie-Hurder<sup>6</sup>, Lauren Peter<sup>7,8</sup>, Christina Chen<sup>1</sup>, Oriol Olive<sup>1</sup>, Todd A. Carter<sup>4</sup>, Shuqiang Li<sup>4</sup>, David J. Lieb<sup>4</sup>, Thomas Eisenhaure<sup>4</sup>, Evisa Gjini<sup>9</sup>, Jonathan Stevens<sup>10</sup>, William J. Lane<sup>10</sup>, Indu Javeri<sup>11</sup>, Kaliappanadar Nellaiappan<sup>11</sup>, Andres M. Salazar<sup>12</sup>, Heather Daley<sup>1</sup>, Michael Seaman<sup>7</sup>, Elizabeth I. Buchbinder<sup>1,2,3</sup>, Charles H. Yoon<sup>3,13</sup>, Maegan Harden<sup>4</sup>, Niall Lennon<sup>4</sup>, Stacey Gabriel<sup>4</sup>, Scott J. Rodig<sup>9,10</sup>, Dan H. Barouch<sup>3,7,8</sup>, Jon C. Aster<sup>3,10</sup>, Gad Getz<sup>3,4,14</sup>, Kai Wucherpfennig<sup>3,5</sup>, Donna Neuberg<sup>6</sup>, Jerome Ritz<sup>1,2,3</sup>, Eric S. Lander<sup>3,4</sup>, Edward F. Fritsch<sup>1,4†</sup>, Nir Hacohen<sup>3,4,15</sup> & Catherine J. Wu<sup>1,2,3,4</sup>

Effective anti-tumour immunity in humans has been associated with the presence of T cells directed at cancer neoantigens<sup>1</sup>, a class of HLA-bound peptides that arise from tumour-specific mutations. They are highly immunogenic because they are not present in normal tissues and hence bypass central thymic tolerance. Although neoantigens were long-envisioned as optimal targets for an anti-tumour immune response<sup>2</sup>, their systematic discovery and evaluation only became feasible with the recent availability of massively parallel sequencing for detection of

agonist poly-ICLC<sup>4</sup> (Hiltonol) (Fig. 1a and Supplementary Information 1–3). We evaluated this vaccine in a phase I study in patients with previously untreated high-risk melanoma (stage IIIB/C and IVM1a/b) after surgical resection with curative intent (Extended Data Table 1 and Supplementary Information 4a).

Of the ten patients enrolled, eight demonstrated the high mutation rate expected for melanoma, carried expected melanoma-associated mutations (that is, in *BRAF*, *NRAS*, and others) and predominantly C→T transitions (consistent with ultraviolet exposure), and expressed

**97 unique neoantigens used across patients, respectively. These T cells discriminated mutated from wild-type antigens, and in some cases directly recognized autologous tumour. Of six vaccinated**

and immunogenicity of a vaccine that targets up to 20 predicted personal tumour neoantigens. Vaccine-induced polyfunctional CD4<sup>+</sup> and CD8<sup>+</sup> T cells targeted 58 (60%) and 15 (16%) of the 97 unique neoantigens used across patients, respectively. These T cells discriminated mutated from wild-type antigens, and in some cases directly recognized autologous tumour. Of six vaccinated patients, four had no recurrence at 25 months after vaccination, while two with recurrent disease were subsequently treated with anti-PD-1 (anti-programmed cell death-1) therapy and experienced complete tumour regression, with expansion of the repertoire of neoantigen-specific T cells. These data provide a strong rationale for further development of this approach, alone and in combination with checkpoint blockade or other immunotherapies.

To generate a vaccine that targets personal neoantigens, we conducted

rash, and fatigue (Supplementary Information 4b).

At a median follow-up of 25 months (range 20–32) after vaccination, four patients who entered the study with stage IIIB/C disease remained without disease recurrence. Two patients entered with previously untreated stage IVM1b disease (lung metastases); both had disease recurrence evident on restaging scans obtained after the last vaccination. Subsequently, both patients underwent treatment with the anti-PD-1 antibody pembrolizumab and, after four doses, both achieved complete radiographic responses that are ongoing (note that complete radiographic response rate of pembrolizumab as first-line treatment for metastatic melanoma was reported as 6.1% (ref. 5)) (Fig. 1b and Extended Data Fig. 1d).

Overlapping 15- to 16-mer assay peptides (ASP) spanning the entirety of each IMP and 9- to 10-mer peptides corresponding to each

# Personalized RNA mutanome vaccines mobilize poly-specific therapeutic immunity against cancer

Ugur Sahin<sup>1,2,3</sup>, Evelyn Derhovanessian<sup>1</sup>, Matthias Miller<sup>1</sup>, Björn-Philipp Kloke<sup>1</sup>, Petra Simon<sup>1</sup>, Martin Löwer<sup>2</sup>, Valesca Bukur<sup>1,2</sup>, Arbel D. Tadmor<sup>2</sup>, Ulrich Luxemburger<sup>1</sup>, Barbara Schrörs<sup>2</sup>, Tana Omokoko<sup>1</sup>, Mathias Vormehr<sup>1,3</sup>, Christian Albrecht<sup>2</sup>, Anna Paruzynski<sup>1</sup>, Andreas N. Kuhn<sup>1</sup>, Janina Buck<sup>1</sup>, Sandra Heesch<sup>1</sup>, Katharina H. Schreeb<sup>1</sup>, Felicitas Müller<sup>1</sup>, Inga Ortseifer<sup>1</sup>, Isabel Vogler<sup>1</sup>, Eva Godehardt<sup>1</sup>, Sebastian Attig<sup>2,3</sup>, Richard Rae<sup>2</sup>, Andrea Breitzkreuz<sup>1</sup>, Claudia Tolliver<sup>1</sup>, Martin Suchan<sup>2</sup>, Goran Martić<sup>2</sup>, Alexander Hohberger<sup>3</sup>, Patrick Sorn<sup>2</sup>, Jan Diekmann<sup>1</sup>, Janko Ciesla<sup>4</sup>, Olga Waksman<sup>4</sup>, Alexandra-Kemmer Brück<sup>1</sup>, Meike Witt<sup>1</sup>, Martina Zillgen<sup>1</sup>, Andree Rothermel<sup>2</sup>, Barbara Kasemann<sup>2</sup>, David Langer<sup>1</sup>, Stefanie Bolte<sup>1</sup>, Mustafa Diken<sup>1,2</sup>, Sebastian Kreiter<sup>1,2</sup>, Romina Nemecek<sup>5</sup>, Christoffer Gebhardt<sup>6,7</sup>, Stephan Grabbe<sup>3</sup>, Christoph Höller<sup>5</sup>, Jochen Utikal<sup>6,7</sup>, Christoph Huber<sup>1,2,3</sup>, Carmen Loquai<sup>3\*</sup> & Özlem Türeci<sup>8\*</sup>

T cells directed against mutant neo-epitopes drive cancer immunity. However, spontaneous immune recognition of mutations is inefficient. We recently introduced the concept of individualized mutanome vaccines and implemented an RNA-based poly-neo-

and RNA sequencing of routine tumour biopsies and healthy blood cells. Mutations were ranked according to: (1) predicted high-affinity binding to autologous HLA class II and high expression of the mutation-encoding RNA<sup>2</sup>, and (2) predicted HLA class I binding.

## Vaccine-induced T cell infiltration and neo-epitope-specific killing of autologous tumour cells were shown in post-vaccination resected metastases from two patients. The cumulative rate of metastatic

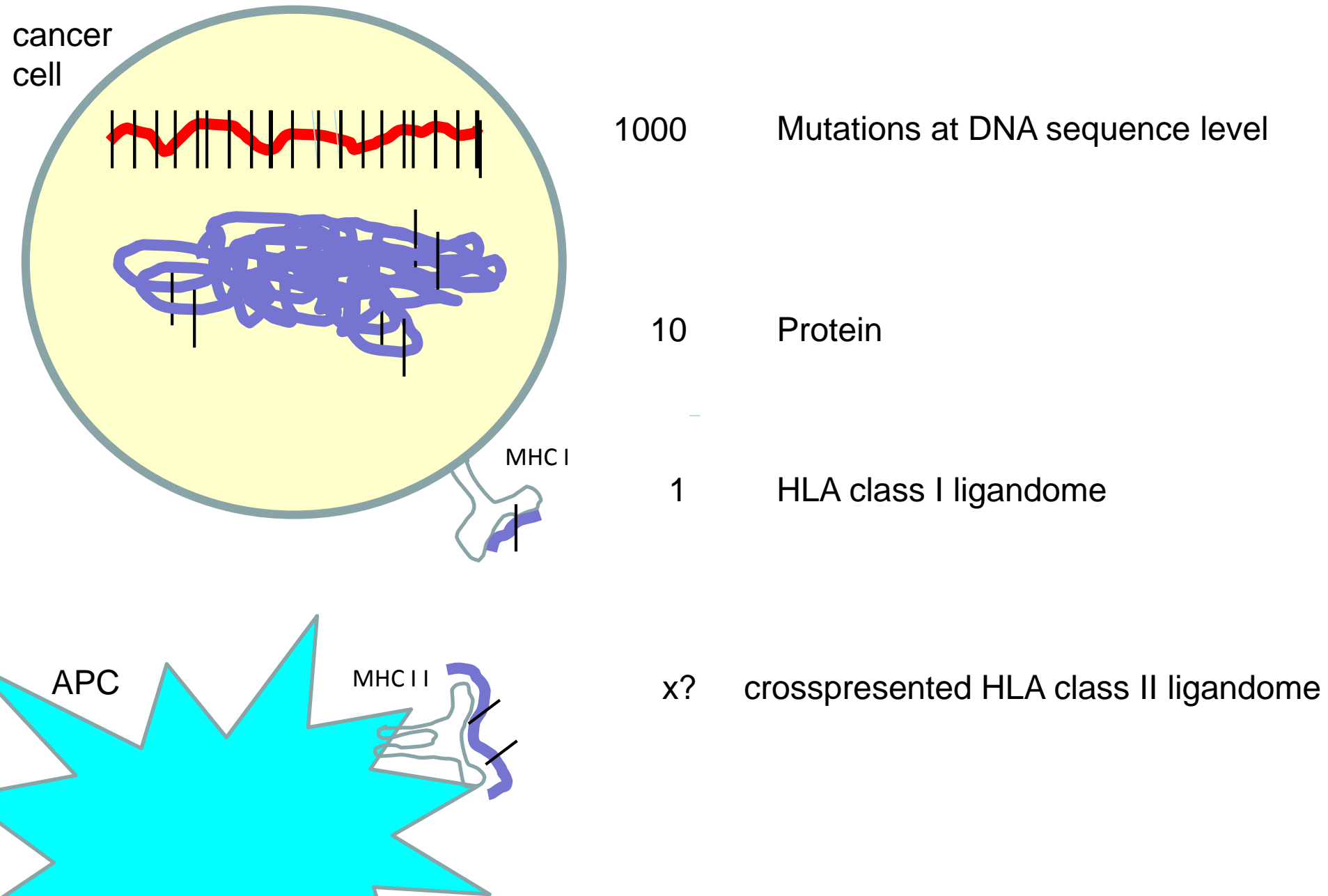
multiple vaccine neo-epitopes at up to high single-digit percentages. Vaccine-induced T cell infiltration and neo-epitope-specific killing of autologous tumour cells were shown in post-vaccination resected metastases from two patients. The cumulative rate of metastatic events was highly significantly reduced after the start of vaccination, resulting in a sustained progression-free survival. Two of the five patients with metastatic disease experienced vaccine-related objective responses. One of these patients had a late relapse owing to outgrowth of  $\beta$ 2-microglobulin-deficient melanoma cells as an acquired resistance mechanism. A third patient developed a complete response to vaccination in combination with PD-1 blockade therapy. Our study demonstrates that individual mutations can be exploited, thereby opening a path to personalized immunotherapy for patients with cancer.

Cancer mutations can form neo-epitopes recognized by T cells

median time from selection of mutations to vaccine release to 105 days (range 89 to 160 days). Patients with NY-ESO-1- and/or tyrosinase-positive melanoma received an RNA vaccine encoding these shared tumour-associated self-antigens until release of their neo-epitope vaccine. At least eight doses of the neo-epitope vaccine were injected percutaneously into inguinal lymph nodes under ultrasound control (Fig. 1d). Previously, in mouse models, we showed efficient uptake, translation of RNA-encoded antigens by lymph-node-resident dendritic cells (DCs), and intrinsic adjuvant activity<sup>15</sup>.

All patients completed treatment with a maximum of 20 neo-epitope vaccine doses (Extended Data Table 1), which they tolerated well without related serious adverse events. The immunogenicity of each of the 125 mutations administered in this study was analysed by IFN $\gamma$  ELISpot in CD4<sup>+</sup> and CD8<sup>+</sup> T cells in pre- and post-vaccination blood samples (Supplementary Table 2). Responses were detected against 60%

# Frequency of presented neoantigens on MHC I vs crosspresented MHC II?



Neoantigens appear to be rare if not absent in many tumors.

But:

There are many **germline** sequence tumor associated HLA ligands, and T cell responses against such antigens correlate with overall survival or other clinical benefit.

3 examples

of attempts

to identify relevant tumor antigens

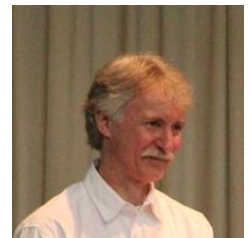
# The immunopeptidomic landscape of ovarian carcinomas

Heiko Schuster<sup>1</sup>, Janet Kerstin Peper<sup>1</sup>, Hans-Christian Bösmüller<sup>2</sup>, Kevin Röhle<sup>1</sup>, Linus Backert<sup>4</sup>, Britta Ney<sup>2</sup>, Markus Löffler<sup>1,5</sup>, Daniel Johannes Kowalewski<sup>1</sup>, Nico Trautwein<sup>1</sup>, Armin Rabsteyn<sup>1,6</sup>, Tobias Engler<sup>3</sup>, Sabine Braun<sup>3</sup>, Barbara Schmid-Horch<sup>7</sup>, Diethelm Wallwiener<sup>3</sup>, Oliver Kohlbacher<sup>4</sup>, Falko Fend<sup>2,6</sup>, Hans-Georg Rammensee<sup>1,6</sup>, Stefan Stevanović<sup>1,6</sup>, Annette Staebler<sup>2</sup> and Philipp Wagner<sup>1,3</sup>

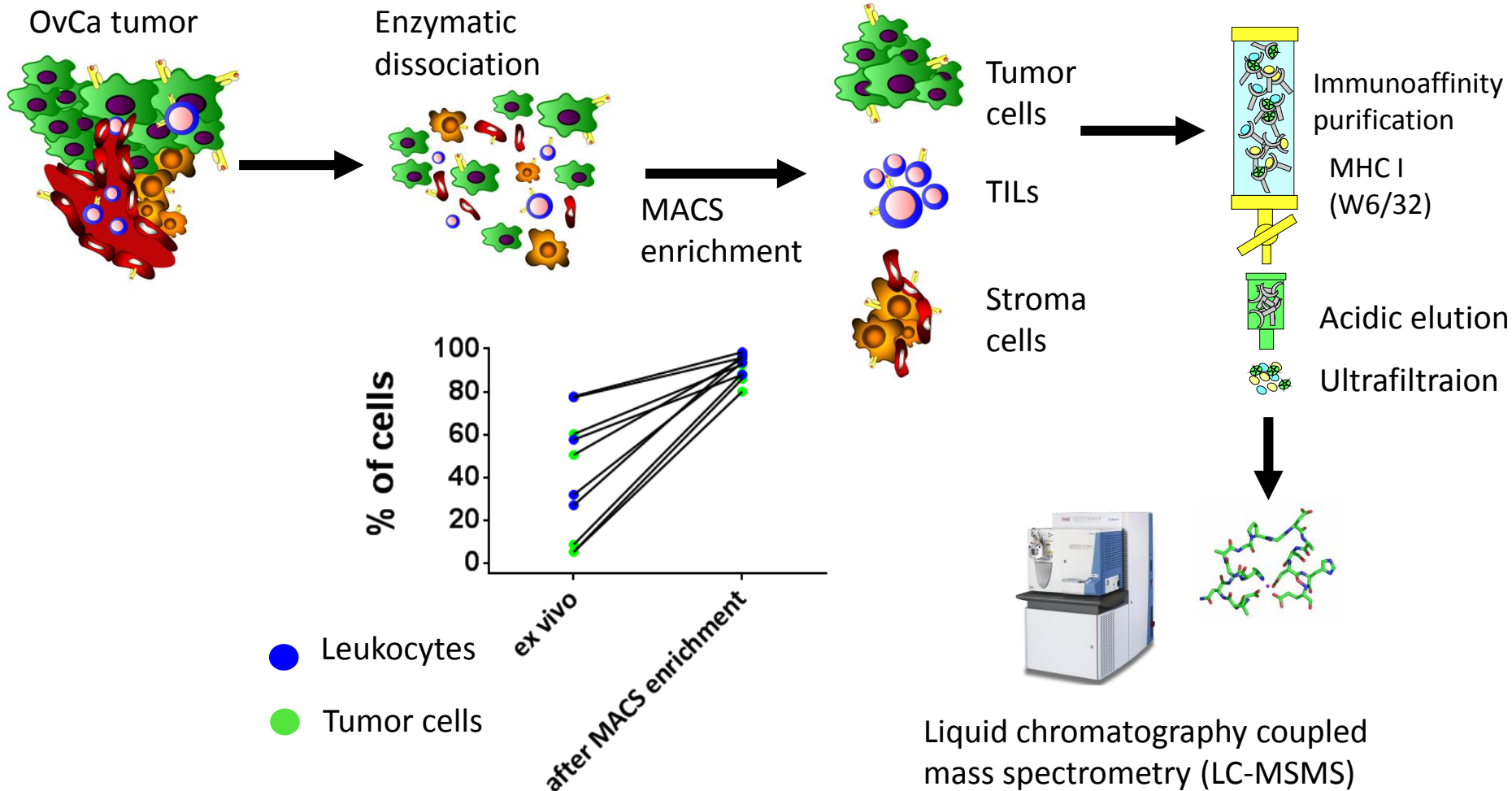
Heiko Schuster and Janet Peper et al., manuscript provisionally accepted (PNAS)



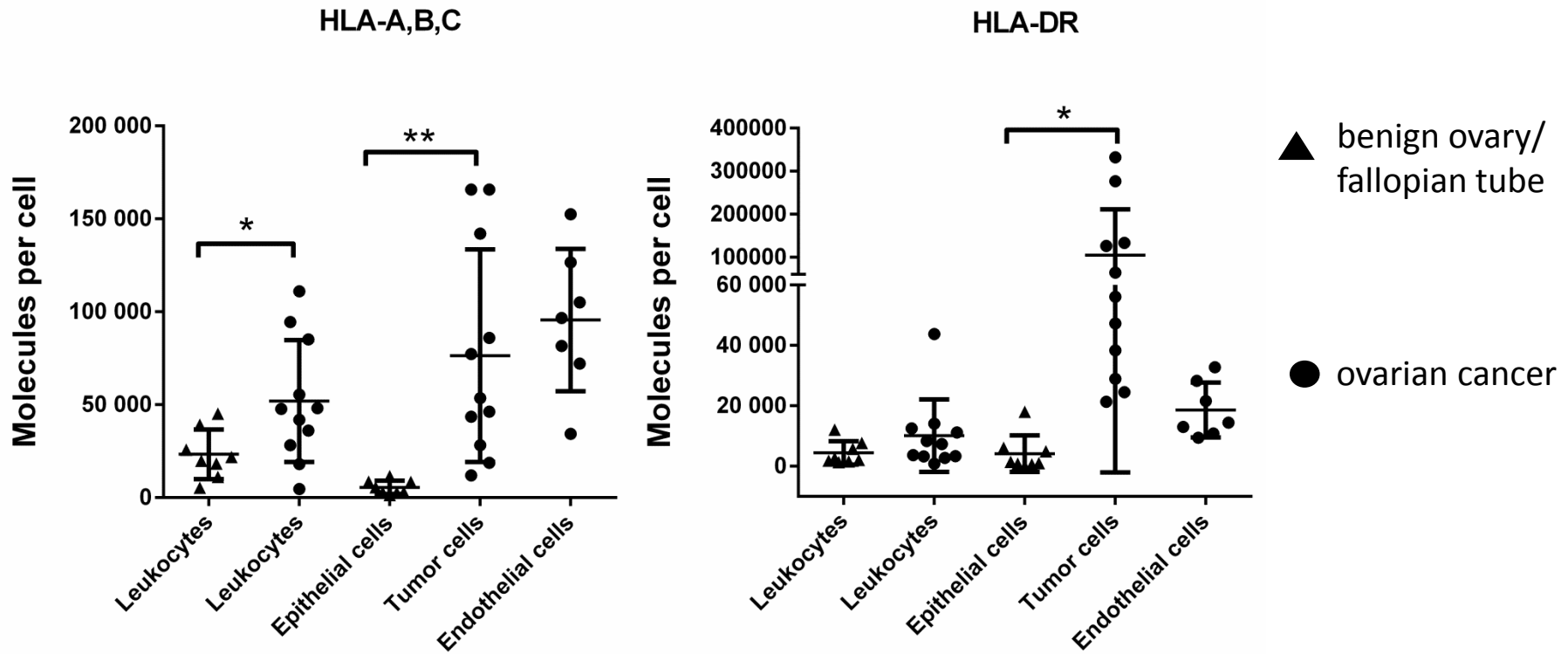
Stevanović Lab



# Enrichment and label free quantification

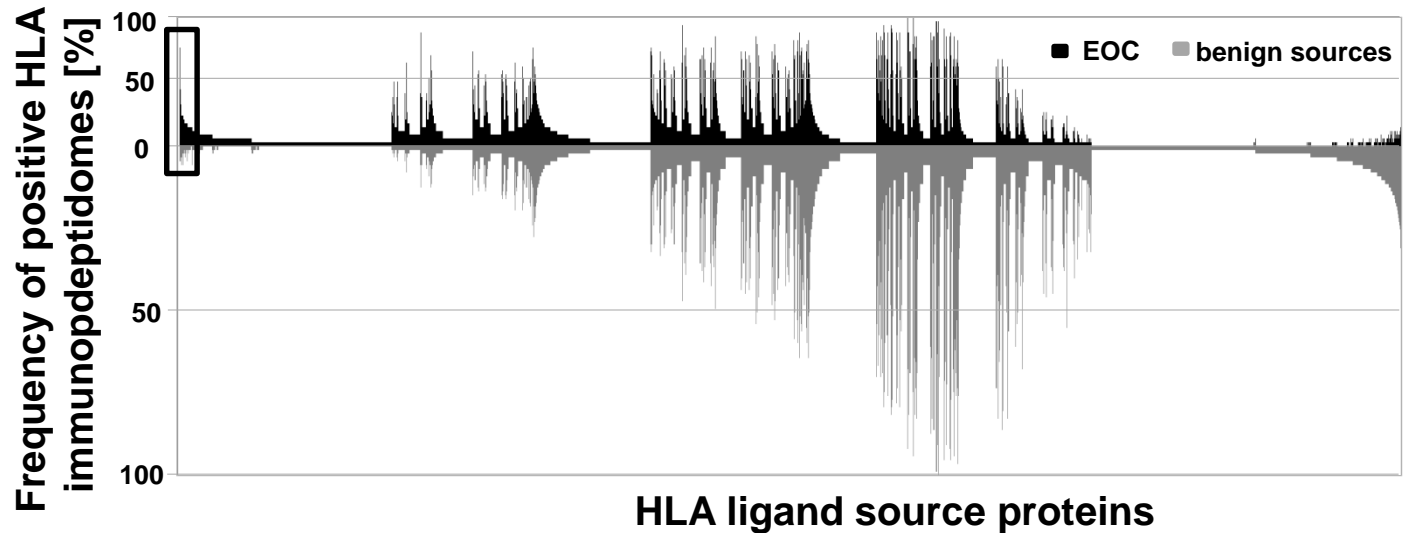


# HLA expression within OvCa tissue





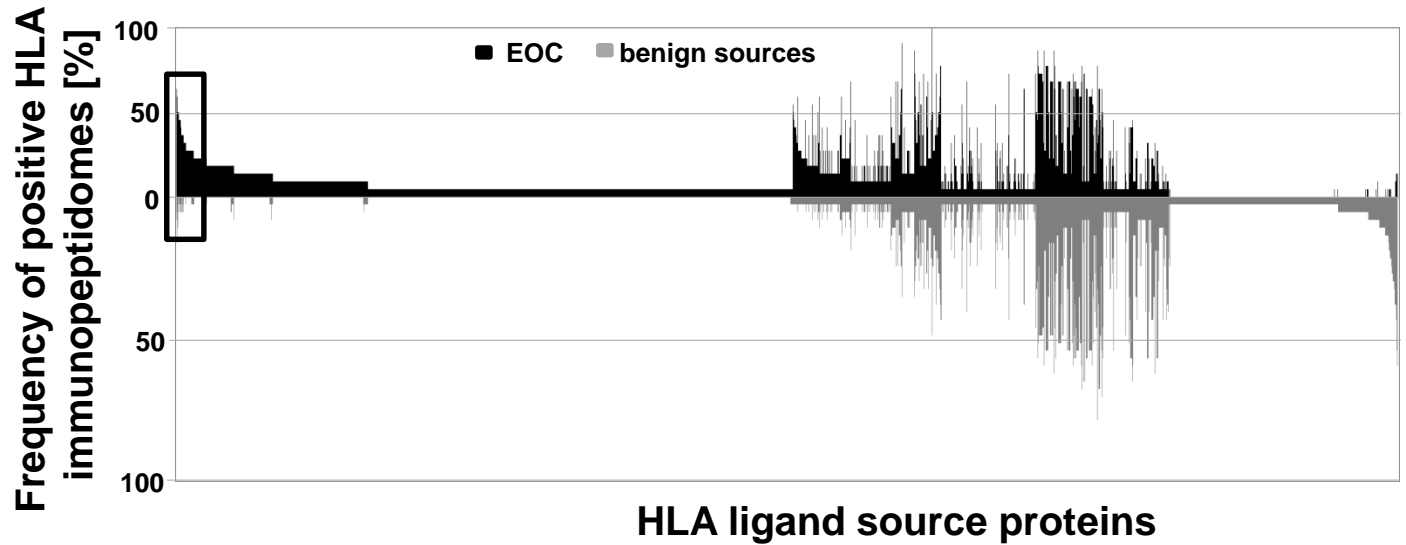
# The immunopeptidomic landscape of OvCa – MHC class I



- 34 OvCa samples
- 30 PBMCs, 10 bone marrow, 15 liver, 12 colon, 4 ovary, 13 kidney samples



# The immunopeptidomic landscape of OvCa – MHC class II



- 22 OvCa samples
- 13 PBMCs, 5 bone marrow, 7 liver, 2 colon, 17 kidney samples



# Frequency and number of HLA ligands among OvCa samples

1 peptide
  2-5 peptides
  6-10 peptides
  > 10 peptides

|        |  |  |  |  |  |  |  |  |  |  |  |  |  |  |  |  |  |  |  |  |  |  |  |  |  |  |  |  |  |  |       |        |
|--------|--|--|--|--|--|--|--|--|--|--|--|--|--|--|--|--|--|--|--|--|--|--|--|--|--|--|--|--|--|--|-------|--------|
| MUC16  |  |  |  |  |  |  |  |  |  |  |  |  |  |  |  |  |  |  |  |  |  |  |  |  |  |  |  |  |  |  | 32/42 | 76.47% |
| CRABP2 |  |  |  |  |  |  |  |  |  |  |  |  |  |  |  |  |  |  |  |  |  |  |  |  |  |  |  |  |  |  | 15/42 | 32.35% |
| EYA2   |  |  |  |  |  |  |  |  |  |  |  |  |  |  |  |  |  |  |  |  |  |  |  |  |  |  |  |  |  |  | 13/42 | 29.41% |
| MMP11  |  |  |  |  |  |  |  |  |  |  |  |  |  |  |  |  |  |  |  |  |  |  |  |  |  |  |  |  |  |  | 11/42 | 23.52% |
| IDO    |  |  |  |  |  |  |  |  |  |  |  |  |  |  |  |  |  |  |  |  |  |  |  |  |  |  |  |  |  |  | 12/42 | 23.52% |
| LGALS1 |  |  |  |  |  |  |  |  |  |  |  |  |  |  |  |  |  |  |  |  |  |  |  |  |  |  |  |  |  |  | 11/42 | 23.52% |
| FOLR1  |  |  |  |  |  |  |  |  |  |  |  |  |  |  |  |  |  |  |  |  |  |  |  |  |  |  |  |  |  |  | 10/42 | 23.52% |
| KLK10  |  |  |  |  |  |  |  |  |  |  |  |  |  |  |  |  |  |  |  |  |  |  |  |  |  |  |  |  |  |  | 9/42  | 17.65% |
| MSLN   |  |  |  |  |  |  |  |  |  |  |  |  |  |  |  |  |  |  |  |  |  |  |  |  |  |  |  |  |  |  | 6/42  | 11.76% |

|      |  |  |  |  |  |  |  |  |  |  |  |  |  |  |  |  |  |  |  |  |  |  |  |  |  |  |  |  |  |  |       |        |
|------|--|--|--|--|--|--|--|--|--|--|--|--|--|--|--|--|--|--|--|--|--|--|--|--|--|--|--|--|--|--|-------|--------|
| ACTB |  |  |  |  |  |  |  |  |  |  |  |  |  |  |  |  |  |  |  |  |  |  |  |  |  |  |  |  |  |  | 41/42 | 97.62% |
|------|--|--|--|--|--|--|--|--|--|--|--|--|--|--|--|--|--|--|--|--|--|--|--|--|--|--|--|--|--|--|-------|--------|

|       |  |  |  |  |  |  |  |  |  |  |  |  |  |  |  |  |  |  |  |  |  |  |  |  |  |  |  |  |  |  |
|-------|--|--|--|--|--|--|--|--|--|--|--|--|--|--|--|--|--|--|--|--|--|--|--|--|--|--|--|--|--|--|
| MSLN  |  |  |  |  |  |  |  |  |  |  |  |  |  |  |  |  |  |  |  |  |  |  |  |  |  |  |  |  |  |  |
| PTPRS |  |  |  |  |  |  |  |  |  |  |  |  |  |  |  |  |  |  |  |  |  |  |  |  |  |  |  |  |  |  |
| UBB   |  |  |  |  |  |  |  |  |  |  |  |  |  |  |  |  |  |  |  |  |  |  |  |  |  |  |  |  |  |  |
| MUC16 |  |  |  |  |  |  |  |  |  |  |  |  |  |  |  |  |  |  |  |  |  |  |  |  |  |  |  |  |  |  |
| DPPA2 |  |  |  |  |  |  |  |  |  |  |  |  |  |  |  |  |  |  |  |  |  |  |  |  |  |  |  |  |  |  |

|       |       |        |
|-------|-------|--------|
| MSLN  | 15/30 | 50.00% |
| PTPRS | 13/30 | 43.33% |
| UBB   | 10/30 | 33.33% |
| MUC16 | 3/22  | 13.64% |
| DPPA2 | 4/30  | 18.18% |

**Immunogenicity analysis of EOC presented HLA ligands from  
MUC16 and further EOC exclusively presented antigens**

| <b>HLA</b> | <b>Sequence</b> | <b>Protein</b> | <b>positive/tested donors</b> |
|------------|-----------------|----------------|-------------------------------|
| A*01       | STETSTVLY       | MUC16          | 0 / 3                         |
| A*02       | IITEVITRL       | MUC16          | 3 / 10                        |
| A*02       | KMISAIPTL       | MUC16          | 4 / 6                         |
| A*03       | SVLADLVTTK      | MUC16          | 0 / 1                         |
| A*11       | STSQEIHSATK     | MUC16          | 2 / 6                         |
| A*11       | GTSGTPVSK       | MUC16          | 0 / 5                         |
| A*24       | TYSEKTLF        | MUC16          | 3 / 3                         |
| A*24       | QFITSTNTF       | MUC16          | 1 / 2                         |
| A*24       | AVTNVRTSI       | MUC16          | 1 / 3                         |
| A*25       | EVITSSRTTI      | MUC16          | 1 / 1                         |
| A*25       | EVISSRGTSM      | MUC16          | 1 / 3                         |
| A*25       | EVTSSGRTSI      | MUC16          | 2 / 3                         |
| A*25       | ETILTFHAF       | MUC16          | 2 / 2                         |
| B*07       | SPHPVTALL       | MUC16          | 1 / 1                         |
| B*07       | SPQNLRNTL       | MUC16          | 2 / 3                         |
| B*07       | TPGNRAISL       | MUC16          | 5 / 5                         |
| B*07       | SPLFQRSSL       | MUC16          | 1 / 3                         |
| B*07       | SPHPVTALL       | MUC16          | 1 / 2                         |
| B*07       | LPHSEITTL       | MUC16          | 1 / 3                         |
| B*07       | TPGGTRQSL       | MUC16          | 0 / 3                         |
| B*07       | SPSKAFASL       | MUC16          | 3 / 3                         |
| B*07       | VPRSAATTL       | MUC16          | 2 / 3                         |
| B*15       | SQGFSHSQM       | MUC16          | 4 / 5                         |
| B*15       | FQRQGQTAL       | MUC16          | 1 / 6                         |
| B*18       | TETEAIHVF       | MUC16          | 1 / 1                         |
| B*27       | ERSPVIQTL       | MUC16          | 1 / 2                         |
| B*51       | DPYKATSAV       | MUC16          | 3 / 3                         |
| B*51       | DALVLKTV        | MUC16          | 1 / 3                         |
| A*03       | RSYHLQIVTK      | IDO1           | 1 / 1                         |
| A*11       | RSYHLQIVTK      | IDO1           | 1 / 1                         |
| A*24       | RYMPPAHRNF      | IDO1           | 4 / 4                         |
| B*07       | NPKAFFSVL       | IDO1           | 3 / 5                         |
| A*25       | EVAPDAKSF       | LGALS1         | 1 / 1                         |
| A*02       | RTTEINFKV       | CRABP1/2       | 1 / 2                         |
| A*02       | RALAKLLPL       | KLK10          | 2 / 2                         |

## Individualized peptide cocktail according to HLA ligandome and Exomseq analysis, ovarian carcinoma patient

| Personalized multi-peptide vaccine for patient OvCA 100 |                               |              |
|---|-------------------------------|--------------|
|   | class I                       |              |
| MUC16   | KMISAIPTL                     | A*02         |
| MUC16   | SPHPVTALL                     | B*07         |
|   |                               |              |
| MUC16   | SPSKAFASL                     | B*07         |
| MUC16   | TPGNRAISL                     | B*07         |
| IDO1  | NPKAFFSVL                     | B*07         |
| DDR1  | FLAEDALNTV                    | A*02         |
|   |                               |              |
|   | class II                      |              |
|   | Longest variant               |              |
| MSLN  | DLPGRFVAESAEVLLPR             |              |
| MUC16   | ELGPYTLDRNSLYVNG              | SB DRB3*0101 |
|   |                               |              |
| Predicted neoantigens from Exomseq                      |                               |              |
| MUC16   | <b>SSLTHEL<u>SS</u>RVTPIP</b> | <b>A*02</b>  |
| PLEKHG2   | <b>PGGGAP<u>ASS</u>RGSWSS</b> | <b>B*07</b>  |



To do for each patient:

1. start first round of vaccination (EU FP7 projects: shelf“)

2. select additional antigens (class II ligands and modifications), second round of vaccination  
[www.GAPVAC.eu](http://www.GAPVAC.eu)

combine a third round of vaccination with an efficient immune modulation  
[www.HEPAVAC.eu](http://www.HEPAVAC.eu)




# GMP center for individualized substances

UNIVERSITÄT  
TÜBINGEN



  
**Baden-Württemberg**  
REGIERUNGSPRÄSIDIUM TÜBINGEN  
LEITSTELLE ARZNEIMITTELÜBERWACHUNG

## HERSTELLUNGSERLAUBNIS

- |   |  |
|---|--|
| 1. Nummer der Erlaubnis/Aktenzeichen  | DE_BW_01_MIA_2012_0109/DE_BW_01_Uni<br>Tübingen_Wirkstoffpeptidlabor   |
| 2. Name des Erlaubnisinhabers   | Eberhard Karls Universität Tübingen  |
| 3. Anschrift/en der Betriebsstätte/n des<br>Herstellers / des Einführers  | Universität Tübingen, Interfakultäres Institut für<br>Zellbiologie, Abteilung Immunologie,<br>Wirkstoffpeptidlabor<br>Auf der Morgenstelle 15<br>72076 Tübingen<br><br>Universität Tübingen, Interfakultäres Institut für<br>Zellbiologie, Abteilung Immunologie,<br>Wirkstoffpeptidlabor - Reinraumbereich ZKT<br>Otfried-Müller-Str. 4/1<br>72076 Tübingen |
| 4. Eingetragene Anschrift des Erlaubnisinhabers   | Geschwister-Scholl-Platz<br>72074 Tübingen   |
| 5. Umfang der Erlaubnis sowie<br>Darreichungsformen   | ANLAGE 2   |
| 6. Rechtsgrundlage der Erlaubniserteilung   | § 13 Absatz 1 des Gesetzes über den Verkehr mit<br>Arzneimitteln (Arzneimittelgesetz - AMG) in<br>gültiger Fassung   |
| 7. Name des verantwortlichen Bearbeiters der<br>zuständigen Behörde des Mitgliedstaates, der<br>die Erlaubnis erteilt | Dr. Manfred Franck   |
| 8. Unterschrift   |    |

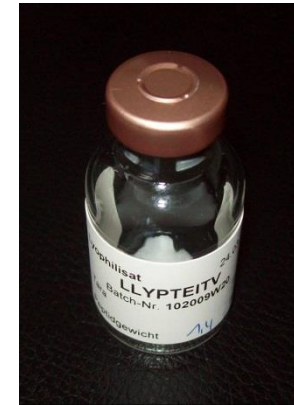
DE\_BW\_01\_MIA\_2012\_0109

Seite 1 von 5



**Peptide production:**

**Stefan Stevanović**  
**Patricia Hrstic**  
**Monika Stieglbauer**  
**Katharina Graf**  
**Stefan Laufer**



J. Hepatology 2016

## Personalized multi-peptide vaccination induces immune responses associated with long term survival in a patient with metastatic intrahepatic cholangiocarcinoma

Markus Löffler<sup>1,2\*</sup>, Anoop Chandran P<sup>1\*</sup>, Karoline Laske<sup>1</sup>, Christopher Schroeder<sup>3</sup>, Irina Bonzheim<sup>4</sup>, Mathias Walzer<sup>1,5</sup>, Franz J. Hilke<sup>3</sup>, Nico Trautwein<sup>1</sup>, Daniel J. Kowalewski<sup>1</sup>, Heiko Schuster<sup>1</sup>, Marc Günder<sup>1</sup>, Christopher Mohr<sup>5</sup>, Marc Sturm<sup>3</sup>, Huu-Phuc Nguyen<sup>3</sup>, Olaf Riess<sup>3</sup>, Peter Bauer<sup>3</sup>, Sven Nahnsen<sup>5</sup>, Silvio Nadalin<sup>2</sup>, Derek Zieker<sup>2</sup>, Jörg Glatzle<sup>2</sup>, Karolin Thiel<sup>2</sup>, Stephan Clasen<sup>6</sup>, Hans Bösmüller<sup>4</sup>, Falko Fend<sup>4</sup>, Oliver Kohlbacher<sup>5</sup>, Cécile Gouttefangeas<sup>1</sup>, Stefan Stevanovic<sup>1,7</sup>, Alfred Königsrainer<sup>2</sup>, Hans-Georg Rammensee<sup>1,7</sup>



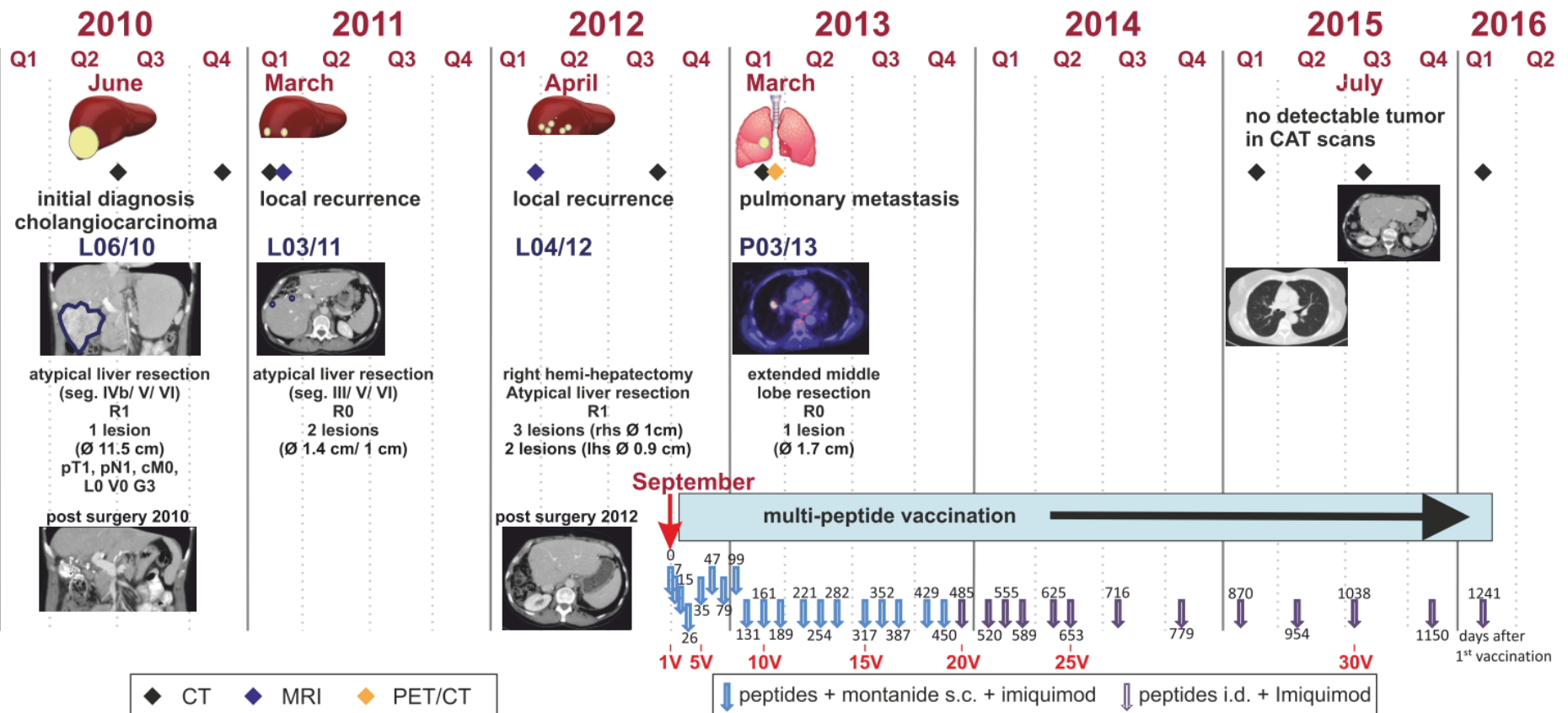


## Composition of the multi-peptide vaccine used

| Samples analyzed |            |           |             |      |            | L06/10                 | P03/12     | L06/10 |                 |
|------------------|------------|-----------|-------------|------|------------|------------------------|------------|--------|-----------------|
| Vaccine Peptides |            |           |             |      | References | Tumor characterization |            |        |                 |
| Peptide Sequence | Identifier | Mass (Da) | AA Position | HLA  | Epitope    | Transcript ID          | RNA (FPKM) |        | MS <sup>2</sup> |
| GLASFKSFLK       | RGS5       | 1096.6    | 74-83       | A*03 | (14)       | NM_003617              | 32         | 81     | +               |
| SLLTSSKGQLQK     | ADFP-2     | 1288.7    | 369-380     | A*03 | (13)       | NM_001122              | 525        | 53     | +               |
| TSALPIIQK        | ADFP-3     | 969.6     | 63-71       | A*03 | (13)       | NM_001122              | 525        | 53     | +               |
| SLFPNSPKWTSK     | MMP7-(1)   | 1390.7    | 79-90       | A*03 | (16)       | NM_002423              | 141        | 1113   | -               |
| NPPSMVAAGSVVAAV  | CCND1      | 1368.7    | 198-212     | DR   | (15, 17)   | NM_053056              | 70         | 30     | n.d.            |
| HSKIIIIKKGHAKDSQ | IGFBP3     | 1802.1    | 142-157     | DR   | (17)       | NM_001013398           | 1          | 0      | n.d.            |
| SQDDIKGIQKLYGKRS | MMP7-(2)   | 1835.0    | 153-168     | DR   | (9, 17)    | NM_002423              | 141        | 1113   | n.d.            |

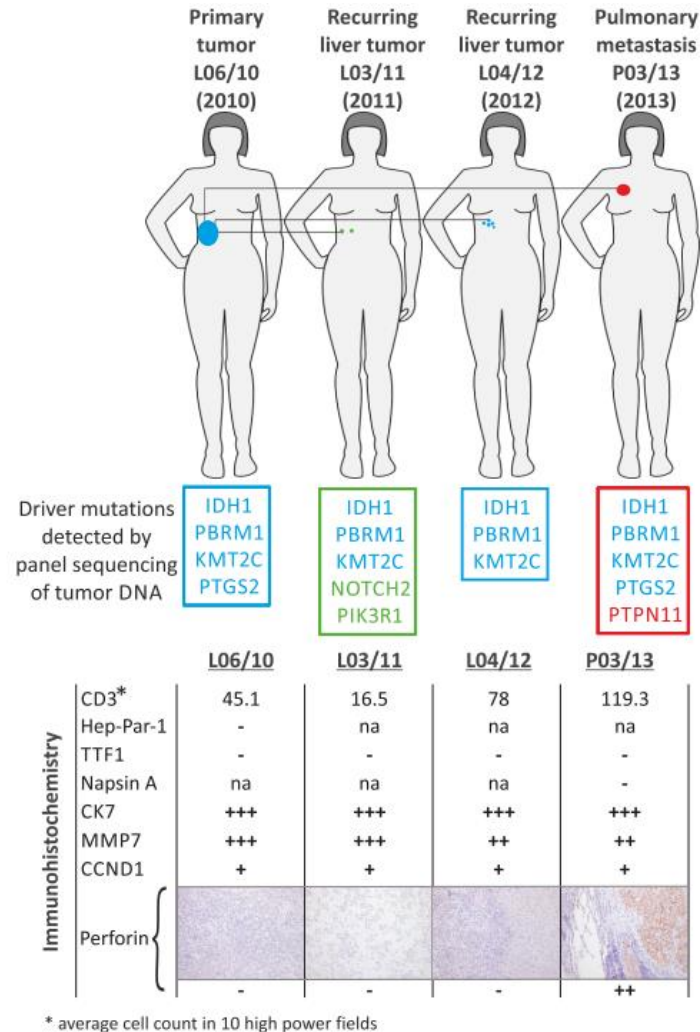
# Induction of peptide-vaccine specific T cell responses correlates with long term survival in a patient with metastatic cholangiocarcinoma

## Clinical Course





## Tumor Characterization



## Leukemias

HLA ligandome analysis in CLL identifies non-mutant epitopes associated with improved patient survival

Kowalewski et al., PNAS 2015

Daniel J. Kowalewski



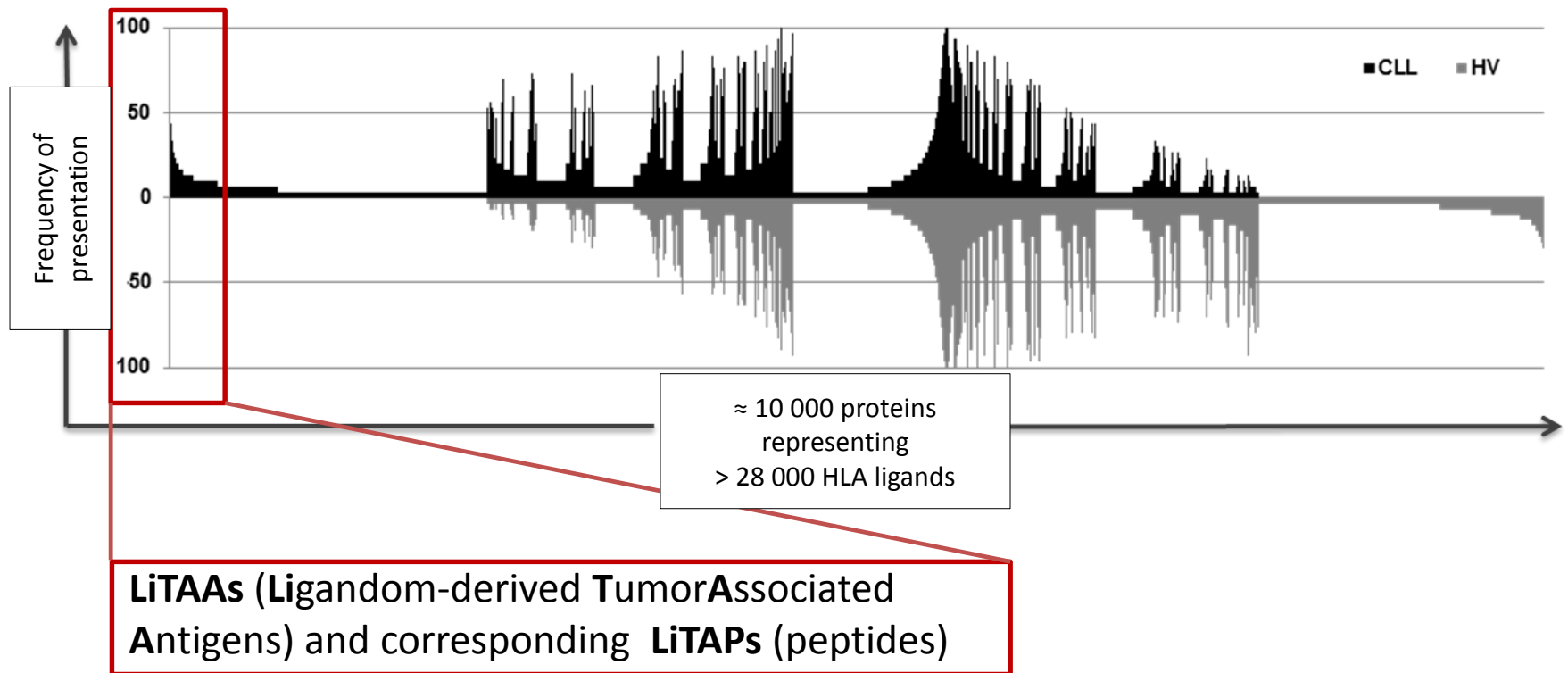
Juliane Stickel



# HLA ligandome analysis in CLL identifies non-mutant epitopes associated with improved patient survival

Kowalewski ... Stickel et al., PNAS 2015

Antigen presentation in the HLA ligandomes of 30 CLL patients vs. 30 normal individuals



➔ 49 LiTAAs (225 LiTAPs) with tumor exclusive presentation in  $\geq 20\%$  of CLL patients

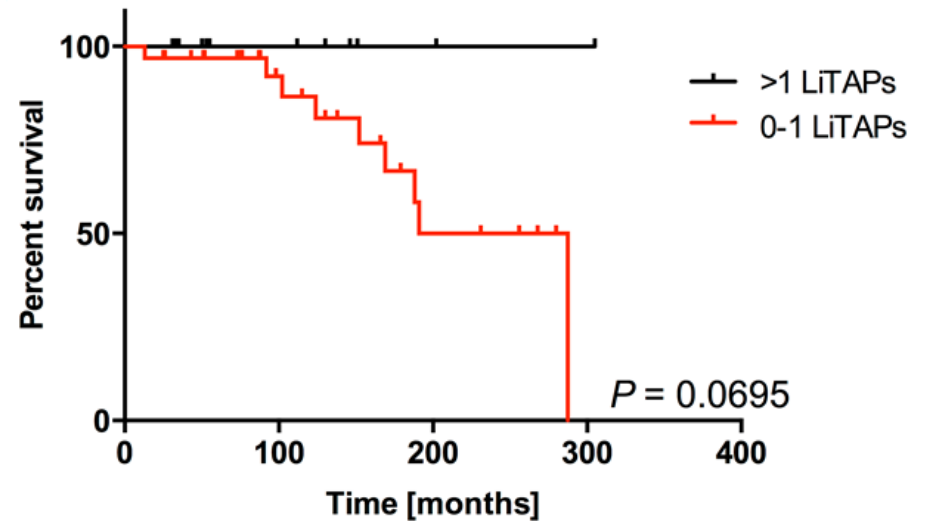
# Association of spontaneous anti-LiTAA T cell responses with patient survival

| Peptide                        | Sequence    | Source protein | CD8+ T-cell response in CLL |
|--------------------------------|-------------|----------------|-----------------------------|
| P <sub>A*03</sub> <sup>1</sup> | YGYNVKEY    | CDC47L         | 3/13 (23.1%)                |
| P <sub>A*03</sub> <sup>2</sup> | AVFDGAQVTSK | TP53I11        | 4/13 (30.8%)                |
| P <sub>A*03</sub> <sup>3</sup> | SSSGLHPPK   | DMXL1          | 5/13 (38.5%)                |
| P <sub>A*02</sub> <sup>1</sup> | ILDEKPVII   | ABCA6          | 2/12 (16.7%)                |
| P <sub>A*02</sub> <sup>2</sup> | YLNKEIEEA   | CTDP1          | 3/12 (25.0%)                |
| P <sub>A*02</sub> <sup>3</sup> | SILEDPPSI   | ASUN           | 3/12 (25.0%)                |
| P <sub>A*02</sub> <sup>4</sup> | DLDVKKMPL   | PARP3          | 2/12 (16.7%)                |
| P <sub>A*02</sub> <sup>5</sup> | QLLDQVEQI   | TMED4          | 3/12 (25.0%)                |
| P <sub>A*02</sub> <sup>6</sup> | AAANIIRTL   | RASGRF1        | 1/12 (8.3%)                 |
| P <sub>B*07</sub> <sup>1</sup> | SPRPPLGSSL  | KDM2B          | 4/6 (66.7%)                 |
| P <sub>B*07</sub> <sup>2</sup> | APLQRSQSL   | TBC1D22A       | 4/8 (50.0%)                 |
| P <sub>B*07</sub> <sup>3</sup> | SPTSSRTSSL  | CELSR1         | 3/6 (50.0%)                 |
| P <sub>B*07</sub> <sup>4</sup> | KPRQSSPQL   | DNMBP          | 3/6 (50.0%)                 |
| P <sub>B*07</sub> <sup>5</sup> | SASVQRADTSL | ZFAND5         | 4/14 (28.6%)                |
| P <sub>B*07</sub> <sup>6</sup> | APGSVLPRAL  | TAGAP          | 0/9 (0%)                    |

| Peptide                      | Sequence          | Source protein | CD4+ T-cell response in CLL |
|------------------------------|-------------------|----------------|-----------------------------|
| P <sub>II</sub> <sup>1</sup> | LPSQAFEYILYNKG    | CTSH           | 2/15 (13.3%)                |
| P <sub>II</sub> <sup>2</sup> | RVEYHFLSPYVSPK    | TFRC           | 1/15 (6.7%)                 |
| P <sub>II</sub> <sup>3</sup> | NSVIIVDKNGRLV     | TFRC           | 2/15 (13.3%)                |
| P <sub>II</sub> <sup>4</sup> | DIMRVNVDKVLERDQKL | VAMP2          | 2/15 (13.3%)                |
| P <sub>II</sub> <sup>5</sup> | YKAFSSLLASSAVSPE  | IL4R           | 3/15 (20.0%)                |
| P <sub>II</sub> <sup>6</sup> | VDKVLERDQKLSLDDR  | VAMP2          | 2/15 (13.3%)                |
| P <sub>II</sub> <sup>7</sup> | DAGSYKAQINQRNFE   | LY9            | 0/15 (0.0%)                 |

Retrospective overall survival in 45 CLL patients (from time of diagnosis)



→ Trend to improved OS in patients with >1 T cell responses against CLL antigens identified by mass spec

iVAC-L-CLL01: Patient-individualized peptide vaccination in combination with  
lenalidomide after first line therapy of CLL

NCT02802943

Juliane Walz, Helmut Salih

*Present and future developments for (individualized)  
active antigen-specific cancer immunotherapy:*

***Use better adjuvants***

*Improve immune responses by immunomodulators*

*Combine with checkpoint inhibition after first  
induction of immune response*



## Problem adjuvant:

Peptide vaccination generally results in weak immune responses, especially after i.d. injection with GM-CSF.

Vaccination with Montanide gives stronger responses, but is described to be problematic (T cell sink, T cell dysfunction described)

## Adjuvants shown to induce CD8/Th1CD4 responses in humans:

CPG (TLR9-L): probably best one so far, but not GMP-available anymore

GM-CSF: weak, may induce MDSCs

Imiquimod, TLR7-L:, topically: efficient, GMP-substance not easily available for adding to vaccine

Poly-IC, TLR3-L - supply limited, GMP-problems

RNAdjuvant (TLR7-L), developed by CureVac: probably very efficient, but limited supply

Efficient immune response by strongly  
adjuvanted vaccination

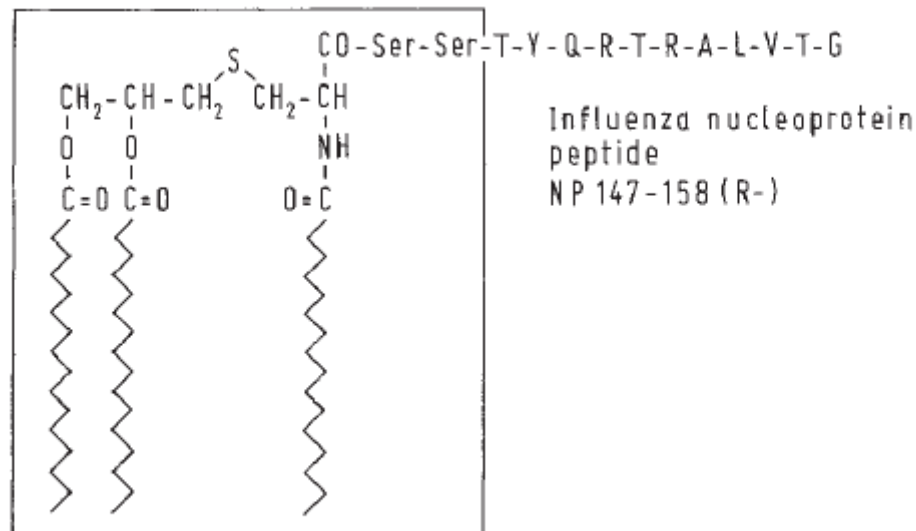
# *In vivo* priming of virus-specific cytotoxic T lymphocytes with synthetic lipopeptide vaccine

Karl Deres\*, Hansjörg Schild†,  
Karl-Heinz Wiesmüller\*, Günther Jung\*  
& Hans-Georg Rammensee†‡

Nature 1989

TLR ligand!

TLR2

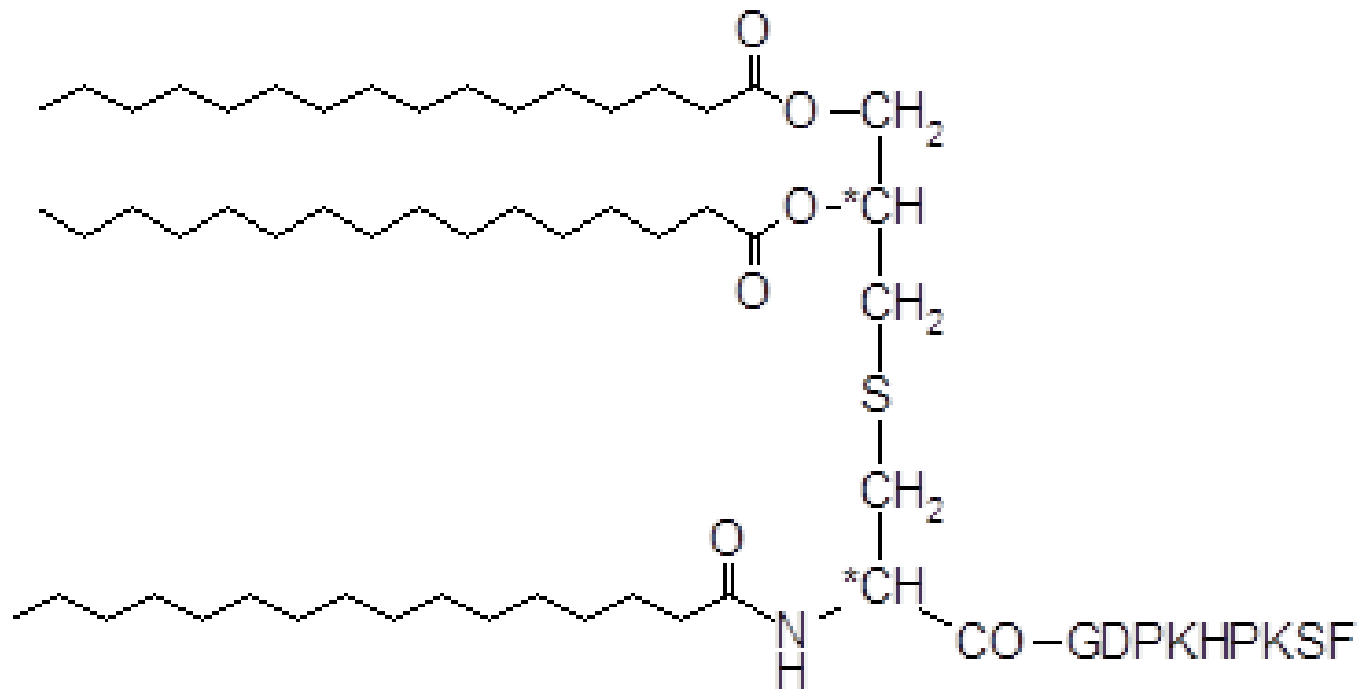


Influenza nucleoprotein  
peptide  
NP 147-158 (R-)

long peptide!

Lipotriptide P<sub>3</sub>CSS

# New synthetic lipopeptide Pam<sub>3</sub>Cys-GDPKHPKSF (XS15)



Karl-Heinz Wiesmüller, EMC microcollections, 2015:

new lipopeptide, **XS15**, (Pam3Cys compound), watersoluble, easy to purify by HPLC: GMP-friendly

Test of XS15 with short synthetic viral peptides and Montanide in a healthy volunteer.

**Peptides are not coupled to the lipopeptide, they are just included in the emulsion!**

|                |                       |  |
|----------------|-----------------------|--|
| PRPVSRLGNNSILY | (HLA-DR, EBV)         | Personalized<br>Multi-Peptid-<br>Vaccine |
| LTDLGQNLLY     | (HLA-A01, Adenovirus) |  |
| ELRSRYWAI      | (HLA-B08, Influenza)  |  |

80 µg XS15

240 µg per Peptide

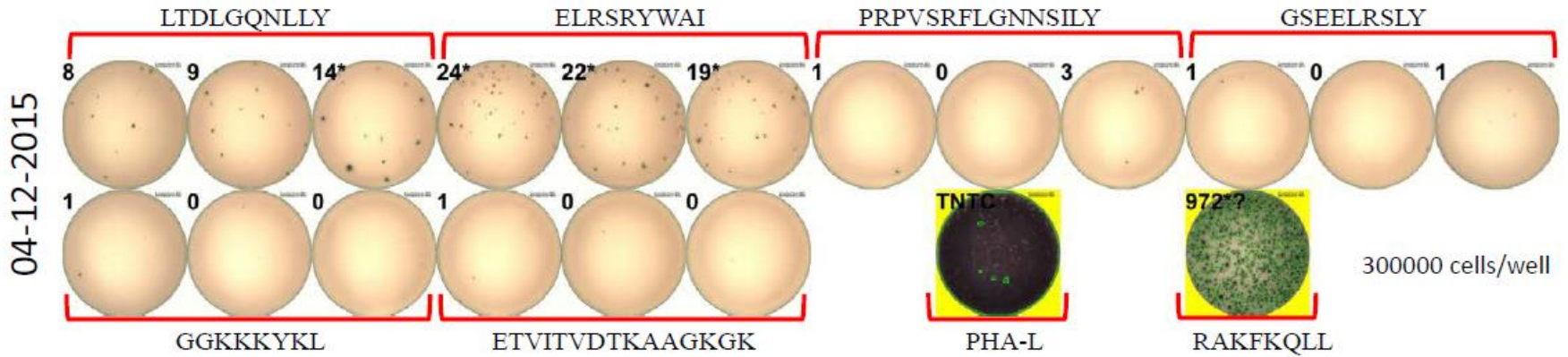
200 µl Montanide ISA51

injected s.c. abdominally, total volume 400 µl

Day 31

Ex-vivo IFN-g ELISPOT

22-01-2016



**22.12.2015**

PRPVSRLFGNNSILY

LTDLGQNLLY

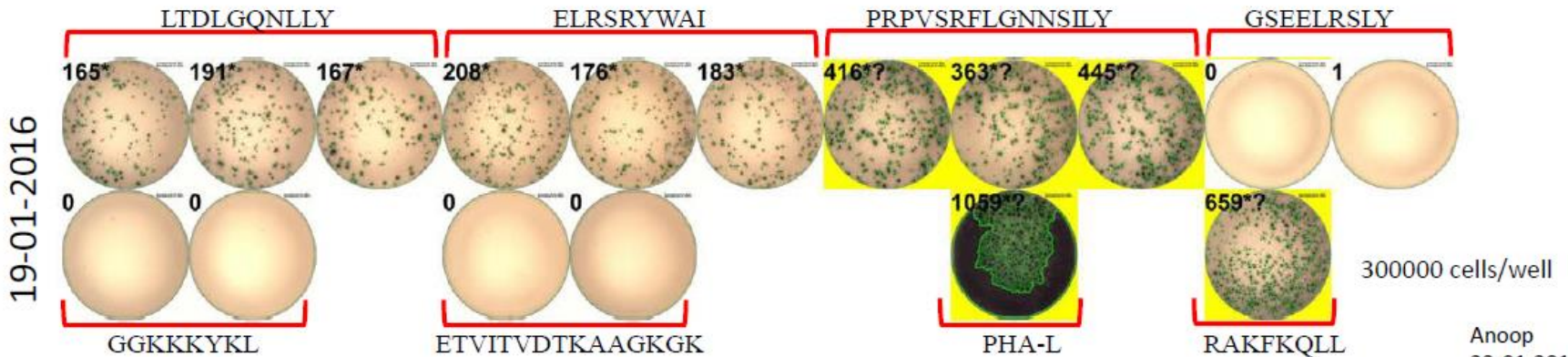
ELRSRYWAI

→ each 3 mg dissolved in 1 ml DMSO/H2O.

→ from this 400 µl + 150 µl XS15 ; (400 µg) + 450 µl H2O + 1 ml Montanide ISA51 emulgated.

→ from this 400 µl s.c. belly left

|                   | Synth. No. | Protein   | Sequence        | HLA |
|-------------------|------------|-----------|-----------------|-----|
| Vaccine peptides  | 121209     | Hex-Ade   | LTDLGQNLLY      | A01 |
|                   | 131288     | Inf-NCAP  | ELRSRYWAI       | B08 |
|                   | 141206     | EBV-GP350 | PRPVSRLFGNNSILY | DR  |
| Negative controls | 121178     | HIV       | GSEELRSLY       | A01 |
|                   | 141345     | HIV       | GGKKKYKL        | B08 |
|                   | 110311     | Filamin A | ETVITVDTKAAGKGK | DR  |
| Positive control  | 91212      | BZLF1_EBV | RAKFKQLL        | B08 |

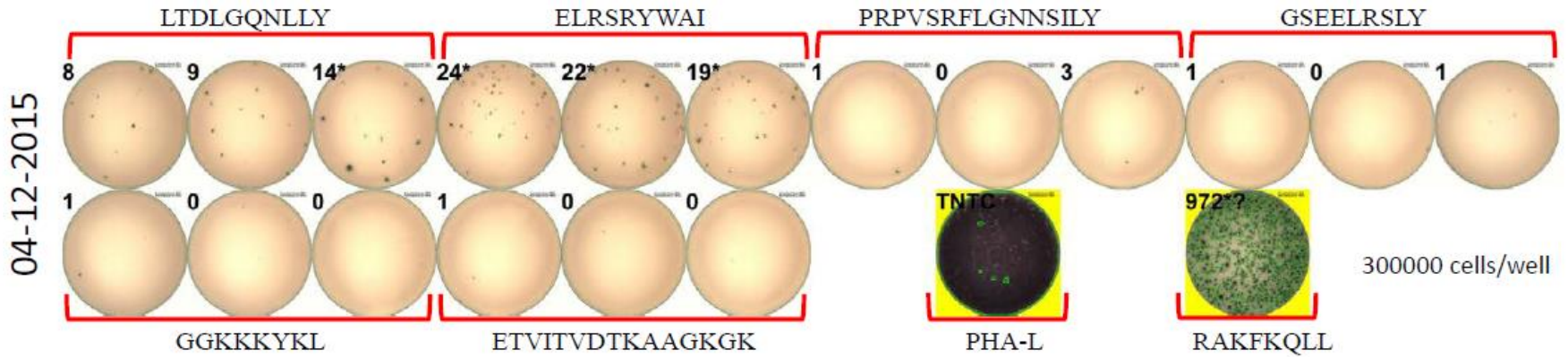


Anoop  
23-01-2016

Day 31

Ex-vivo IFN-g ELISPOT

22-01-2016



**22.12.2015**

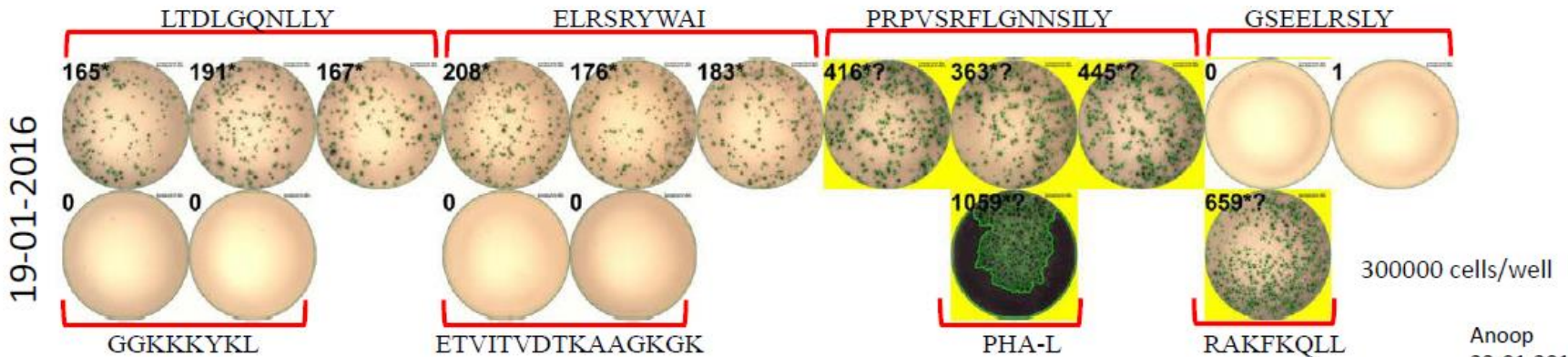
PRPVSRLGNNSILY  
LTDLGQNLLY  
ELRSRYWAI

→ each 3 mg dissolved in 1 ml DMSO/H2O.

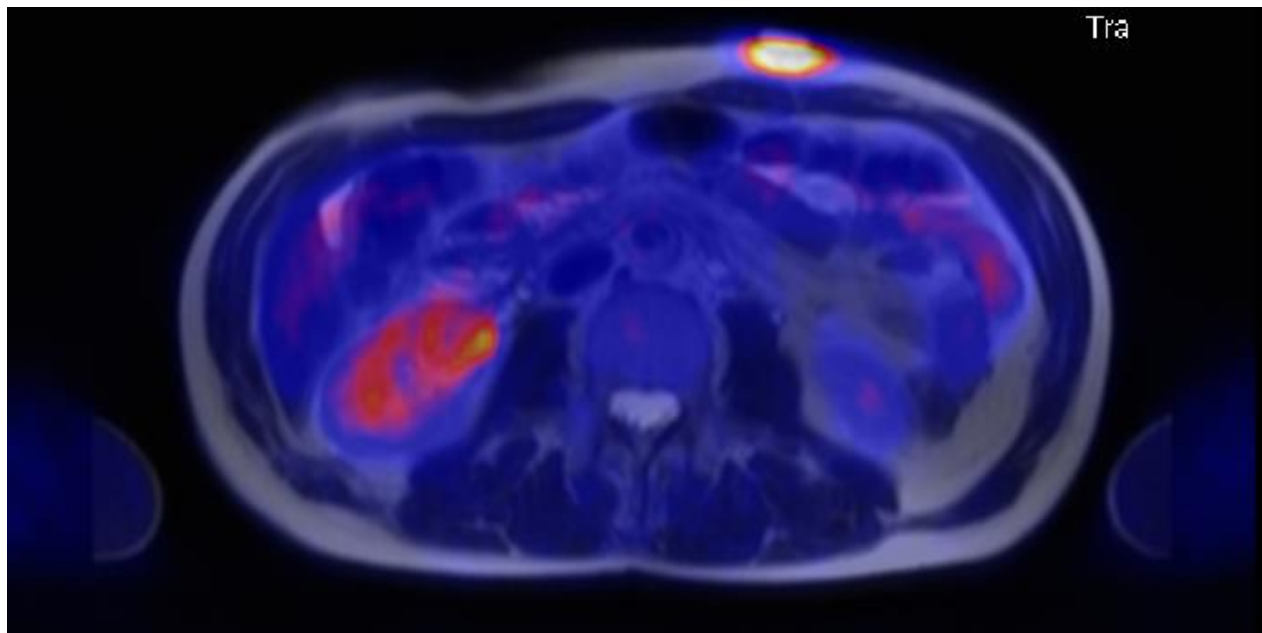
→ from this 400 µl + 150 µl XS15 ; (400 µg) + 450 µl H2O  
+ 1 ml Montanide ISA51 emulgated.

→ from this 400 µl s.c. belly left

|                   | Synth. No. | Protein   | Sequence         | HLA |
|-------------------|------------|-----------|------------------|-----|
| Vaccine peptides  | 121209     | Hex-Ade   | LTDLGQNLLY       | A01 |
|                   | 131288     | Inf-NCAP  | ELRSRYWAI        | B08 |
|                   | 141206     | EBV-GP350 | PRPVSRLGNNSILY   | DR  |
| Negative controls | 121178     | HIV       | GSEELRSLY        | A01 |
|                   | 141345     | HIV       | GGKKKYKL         | B08 |
|                   | 110311     | Filamin A | ETVITVDTKAAGK GK | DR  |
| Positive control  | 91212      | BZLF1_EBV | RAKFKQLL         | B08 |

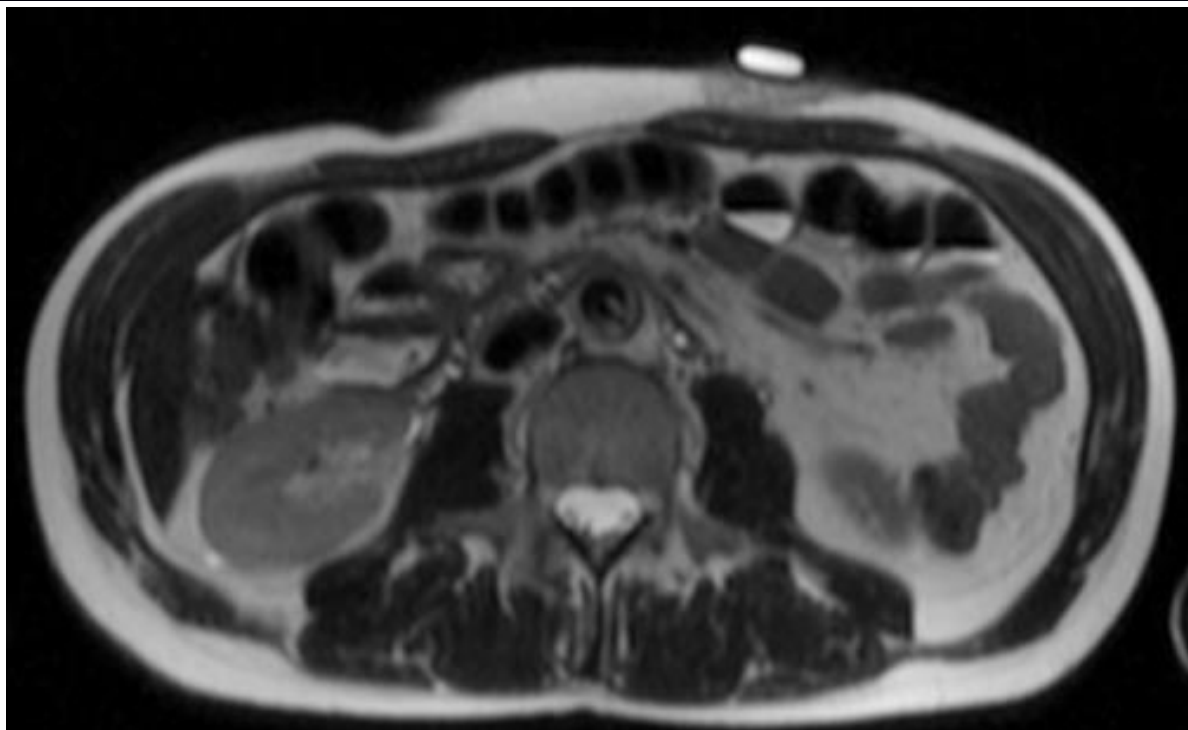


Anoop  
23-01-2016



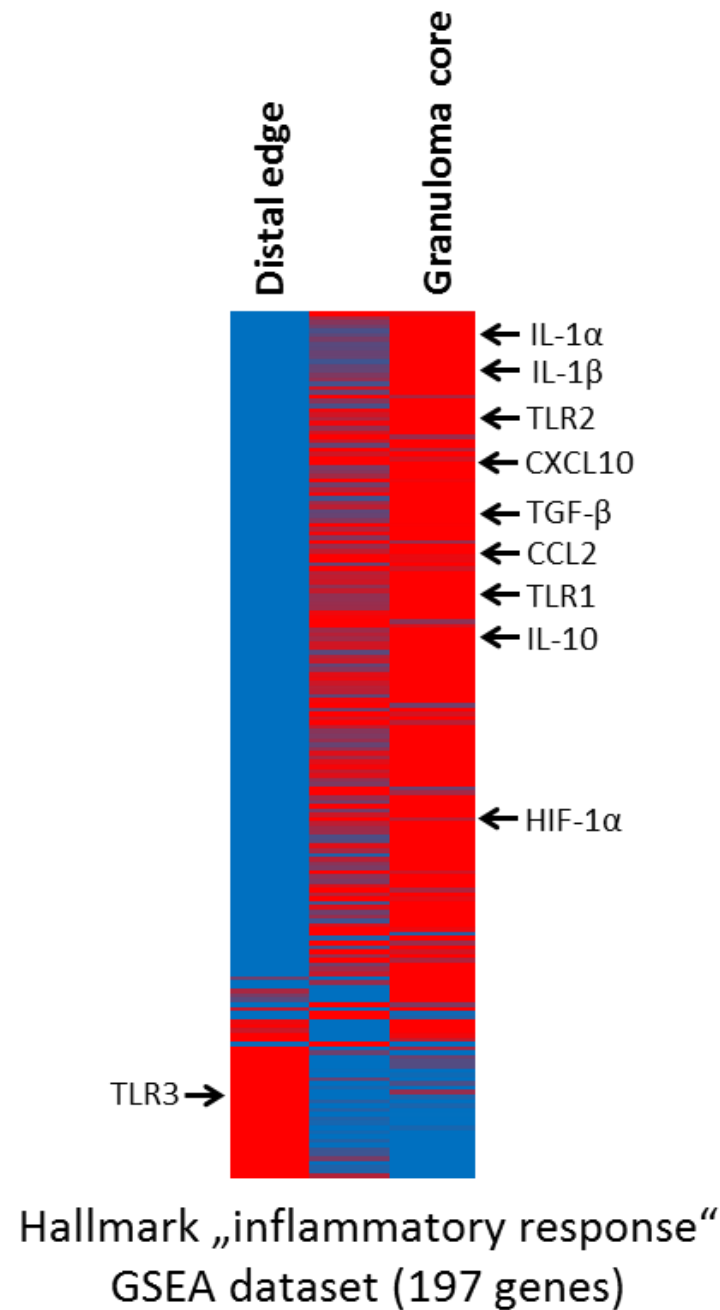
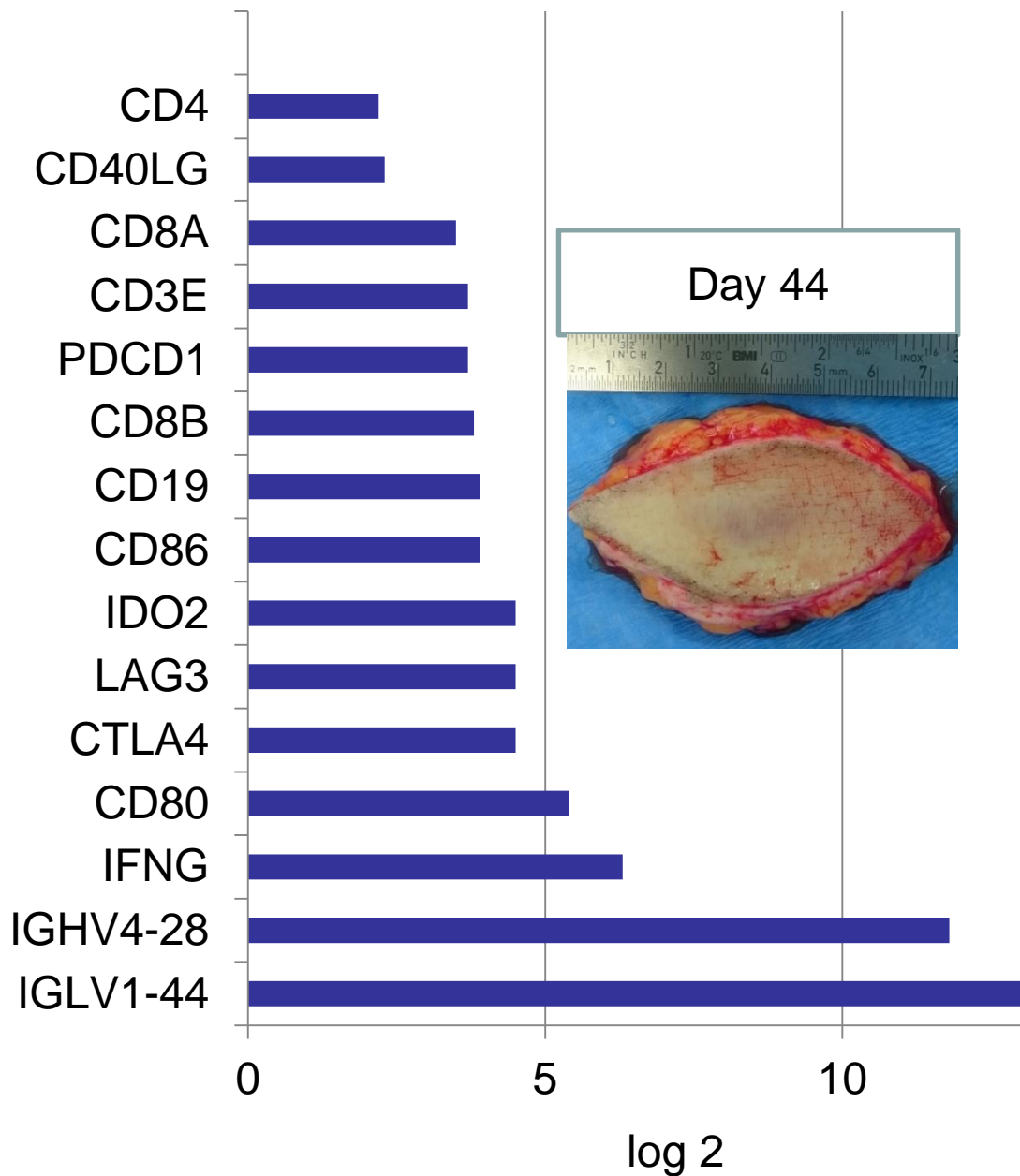
Day 43

$^{18}\text{F}$ FDG-PET/MRI





## Differential gene expression analysis Granuloma center vs. normal skin

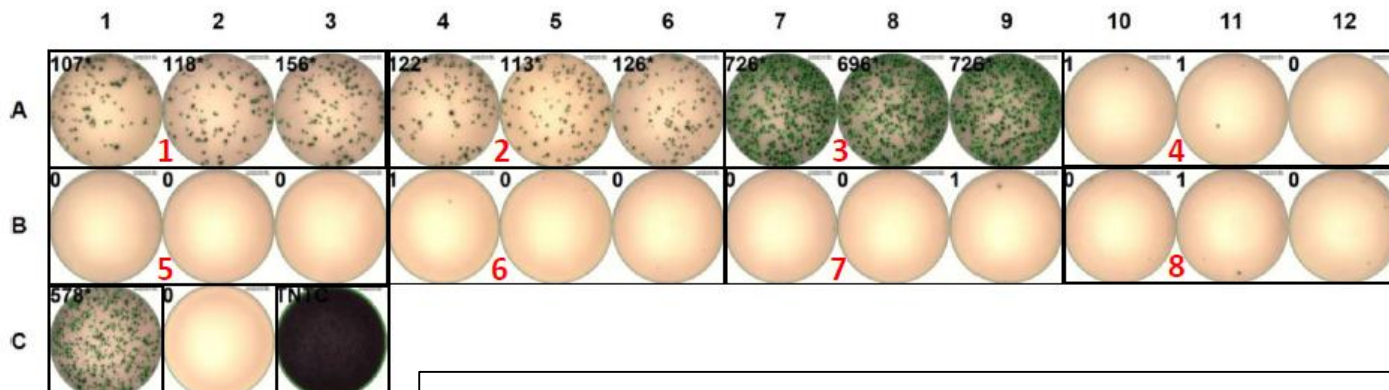


Day 44

Ex-vivo IFN- $\gamma$  ELISPOT

Plate 1

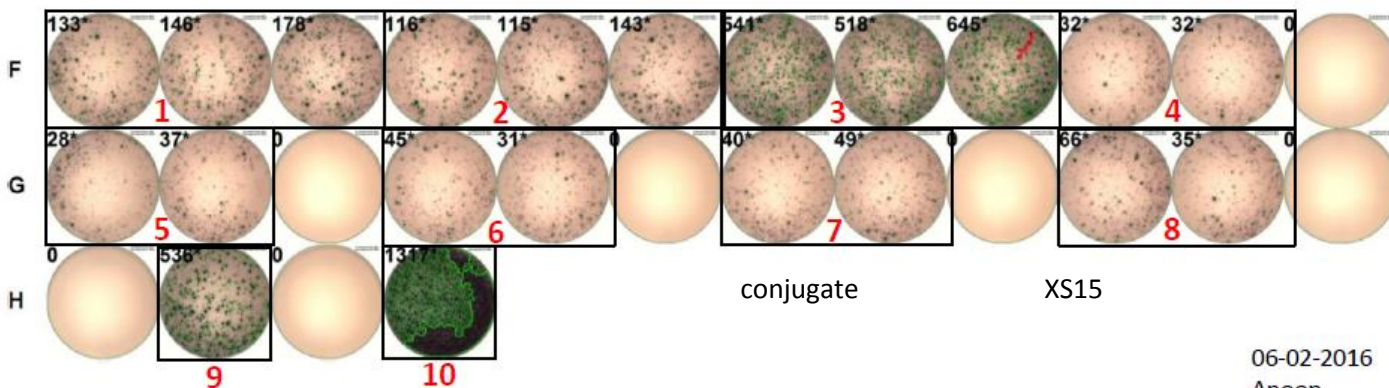
PBMCs  
04-02-2016  
300.000 cells/well



|                     |    | syn.no | Protein   | Sequence         | HLA |
|---------------------|----|--------|-----------|------------------|-----|
| vaccinated peptides | 1  | 121209 | Hex-Ade   | LTDLGQNLLY       | A01 |
|                     | 2  | 131288 | Inf-NCAP  | ELRSRYWAI        | B08 |
|                     | 3  | 141206 | EBV-GP350 | PRPVSFRFLGNNSILY | DR  |
| Negative controls   | 4  | 121178 | HIV       | GSEELRSLY        | A01 |
|                     | 5  | 141345 | HIV       | GGKKKYKL         | B08 |
|                     | 6  | 110311 | Filamin   | ETVITVDTKAAGKGK  | DR  |
| GDP...peptide       | 7  | -      | -         | -                | -   |
| P3C                 | 8  | -      | -         | -                | -   |
| Positive peptide    | 9  | 91212  | BZLF1_EBV | RAKFKQLL         | B08 |
| Positive control    | 10 | -      | PHA-L     | -                | -   |

high frequency of functional antigen specific T<sub>EM</sub> CD4 and CD8 T cells in the granuloma infiltrating lymphocytes producing IFN $\gamma$ , IL2, TNF, and CD107 for CD8 cells

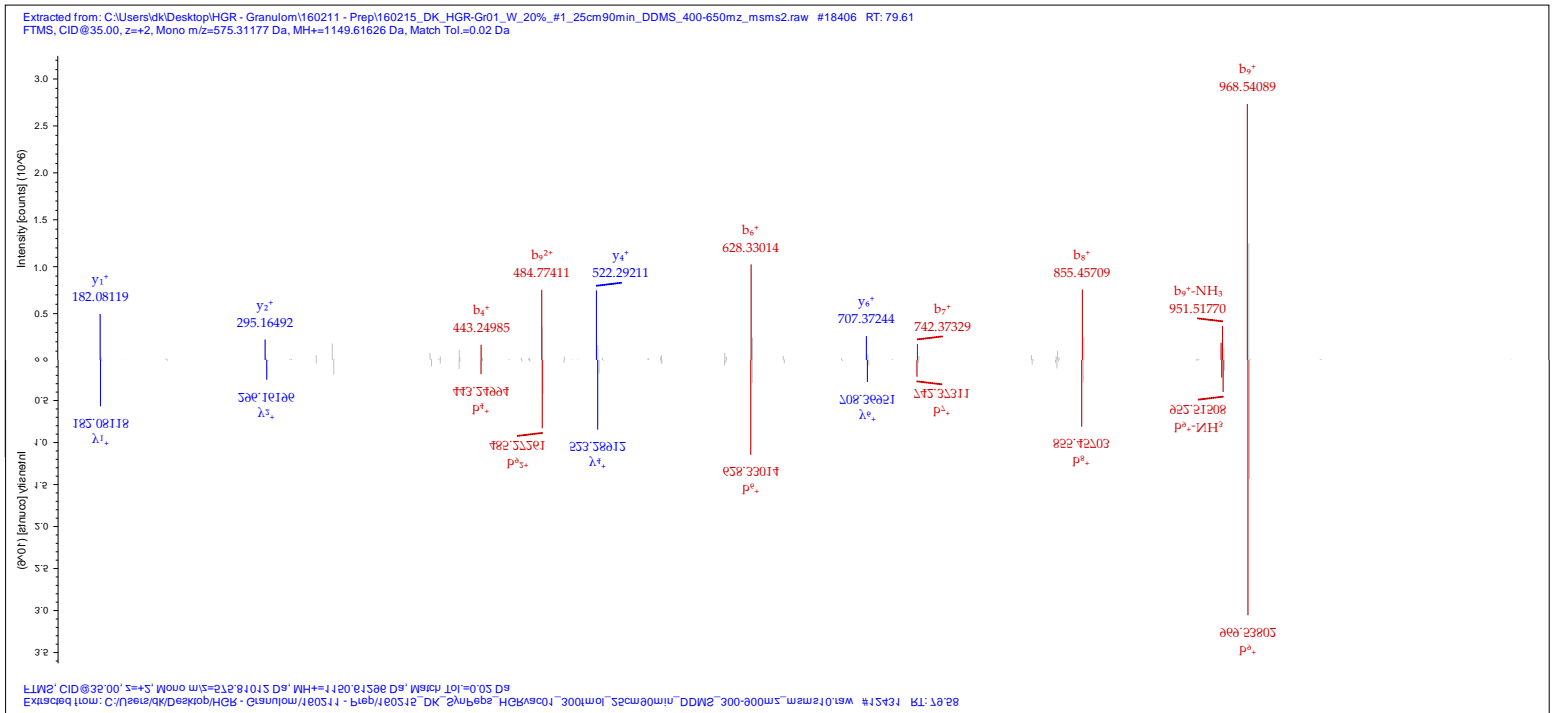
GILs  
04-02-2016  
50.000 cells/well



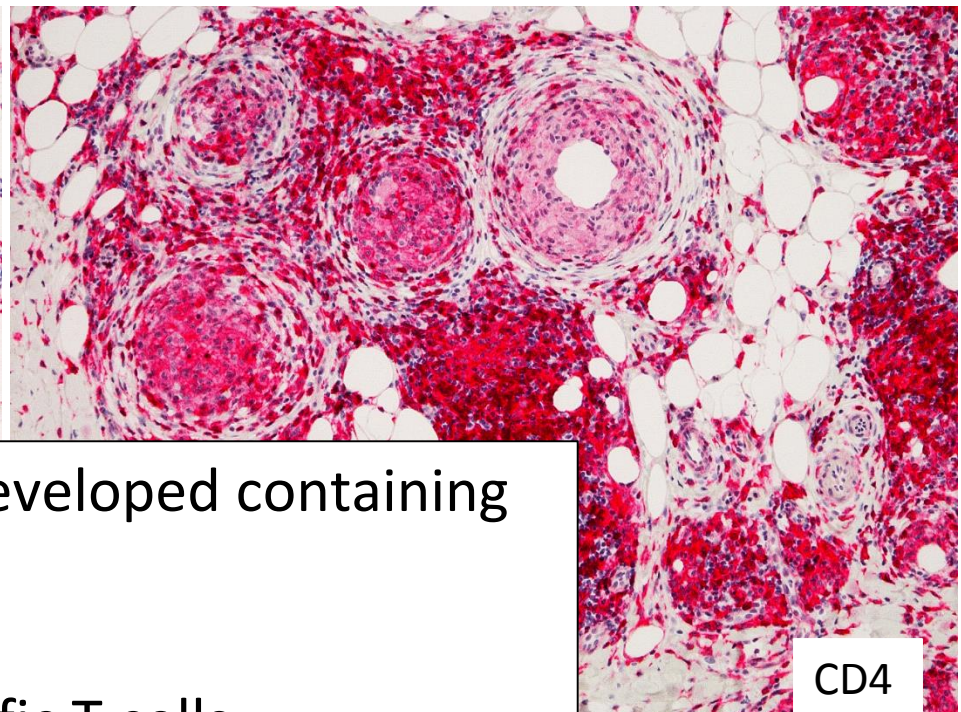
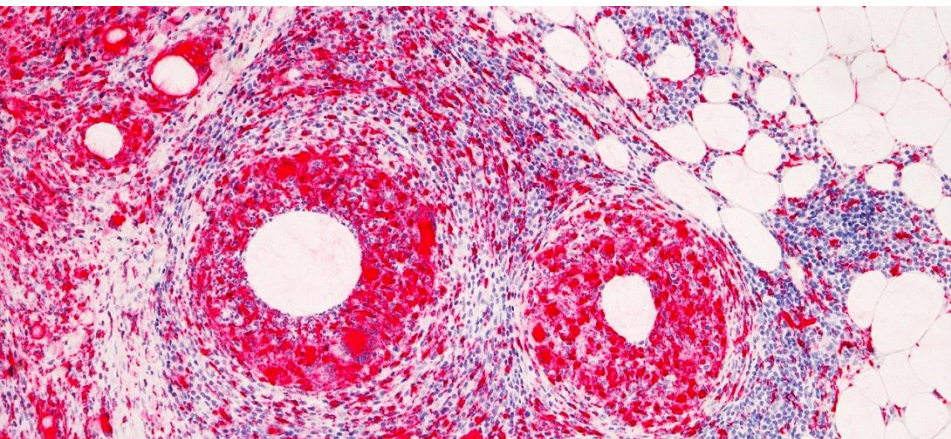
# Prep: W6/32 20% DDMs: ADV\_Hexon Protein: LTDLGQNLly (A\*01)

**Primary Sample**  
HGR-GR01  
W6/32 20% DDMs

**SynPep**  
L9 15N labeled!  
(300 fmol w/o matrix)

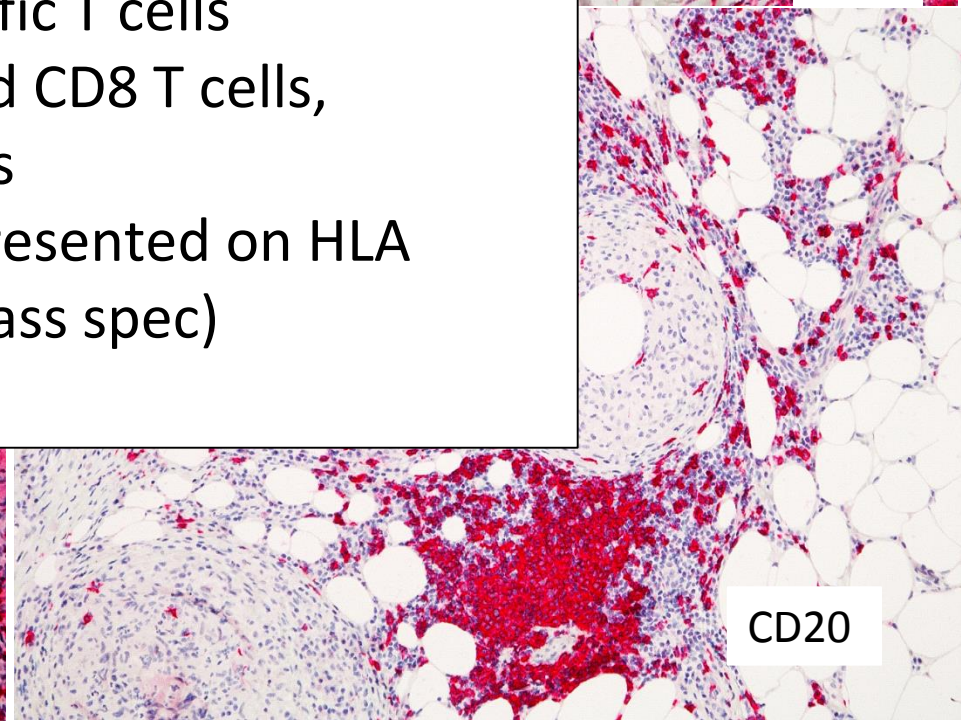
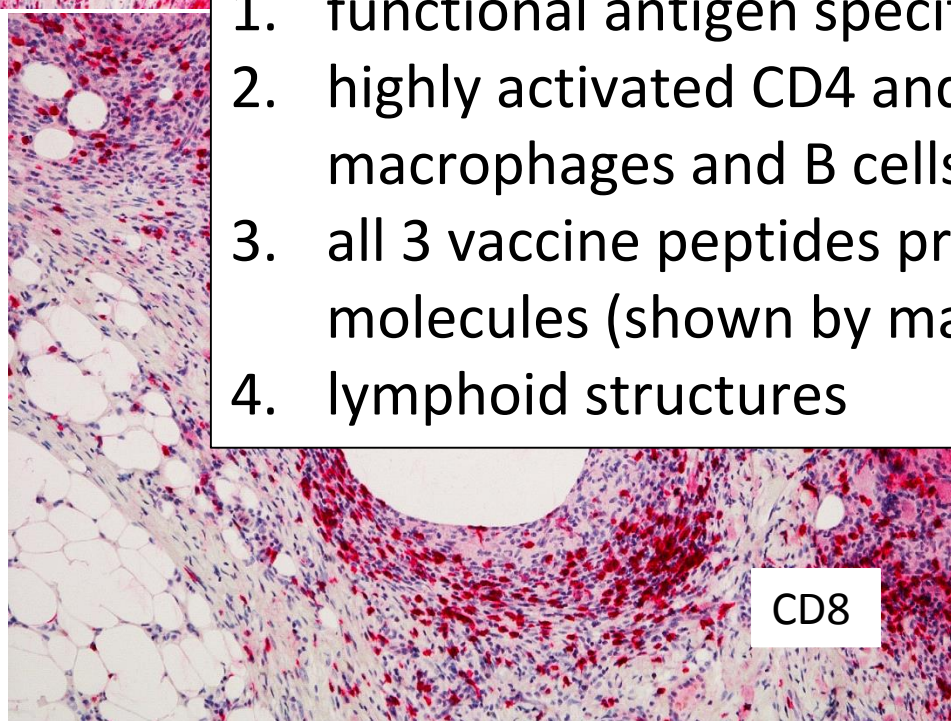


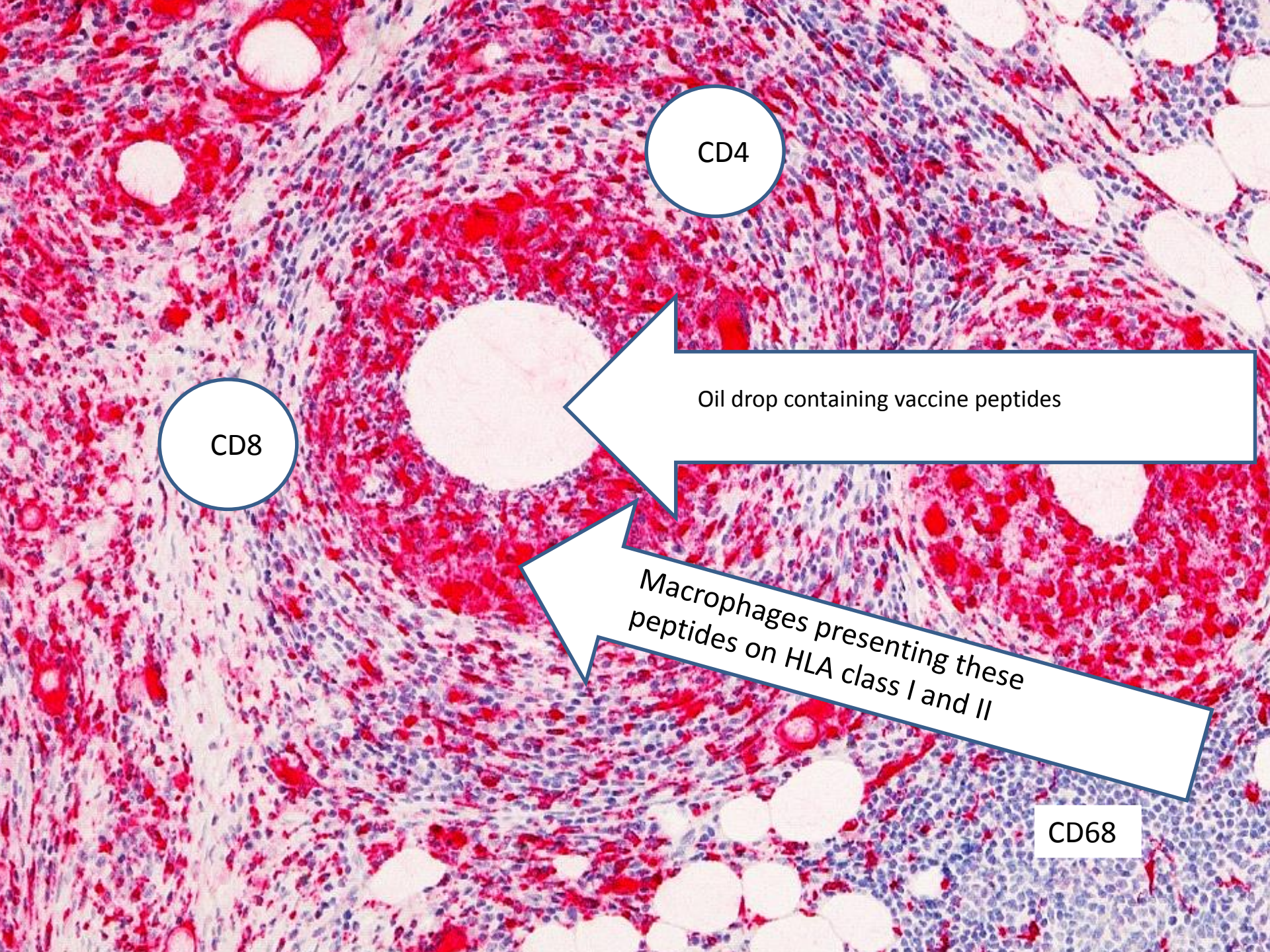
All 3 vaccine peptides are detectable as HLA-bound peptides in the granuloma 44 days after injection.



A vaccine-site granuloma developed containing at day 44:

1. functional antigen specific T cells
2. highly activated CD4 and CD8 T cells, macrophages and B cells
3. all 3 vaccine peptides presented on HLA molecules (shown by mass spec)
4. lymphoid structures





CD4

CD8

Oil drop containing vaccine peptides

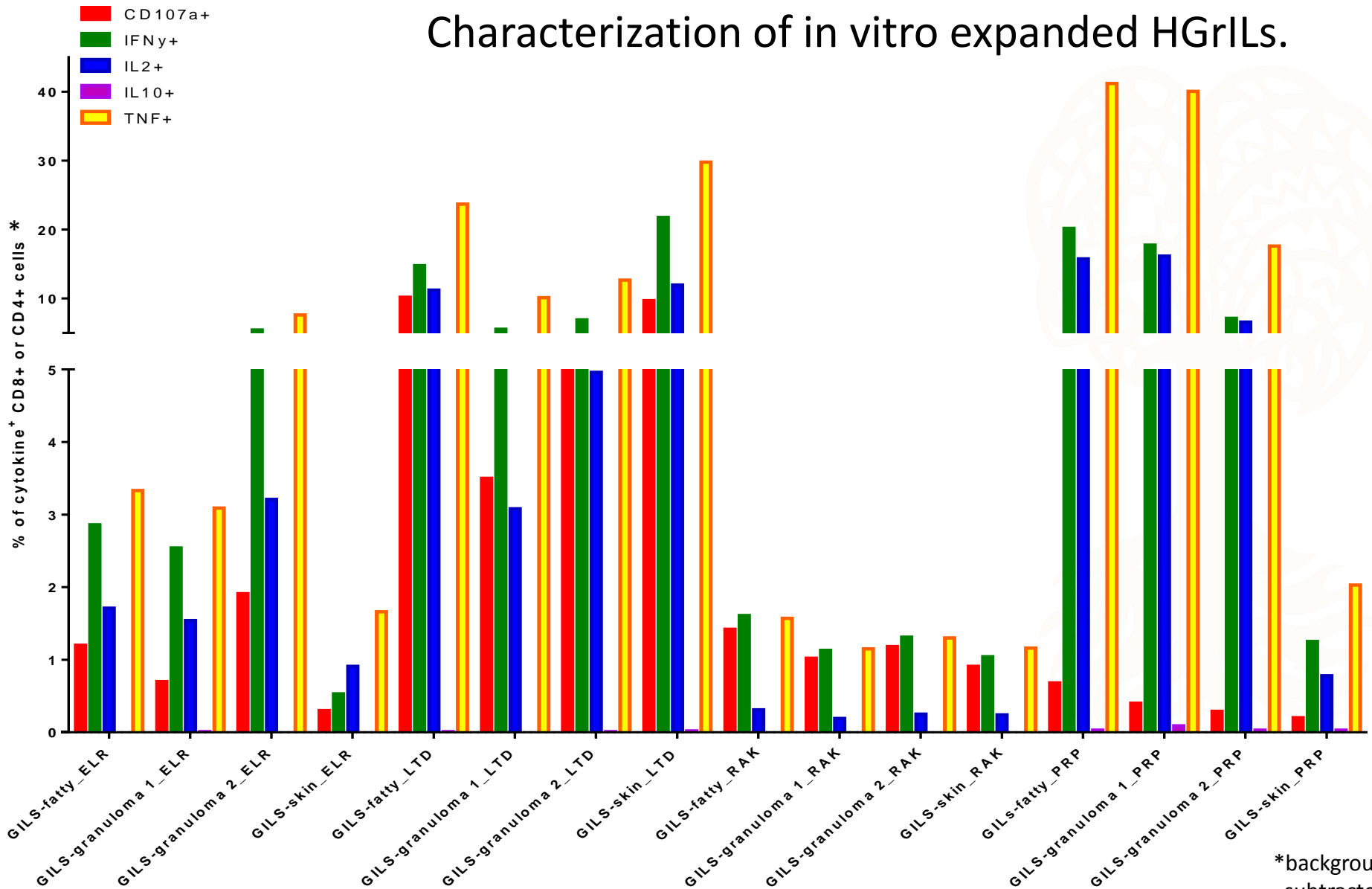
Macrophages presenting these peptides on HLA class I and II

CD68

# - ICS results -

ICS after cultivation with Anti-CD3 and IL2 of GILs – 19.02.2016

## Characterization of in vitro expanded HGrILs.



\*background subtracted

Single vaccination with CMV-peptides plus XS15 induces strong CMV- specific CD8 and CD4 T cell response in CMV-seronegative individual within 4 weeks (ex-vivo ELISPOT)

|                   |         |                      |
|-------------------|---------|----------------------|
| PRPVSRLFNGNSILY   | EBV     | preexisting response |
| VTEHDTLLY         | CMV, A1 | vacc, but negative   |
| ELRRKMMYM         | CMV, B8 | vacc, but negative   |
| KPGKISHIMLDVAFTSH | CMV, DR | vacc, but weak       |
| YQEFFWDANDiYRIF   | CMV, DR | new                  |
| YSEHPTFTSQY       | CMV, A1 | vacc, but negative   |

04-12-2015



Vaccination  
22-12-2015



19-01-2016

EBV\_PRPVS.. (DR)  
141149

One shot vaccination with CMV-peptides plus XS15 induces strong CMV-T-cell response CMV-seronegative individual within 4 weeks (Ex-vivo ELISPOT)

ex vivo

EBV\_PRPVS.. (DR)  
141149

CMV\_KPGK.. (DR)  
165056

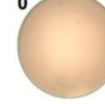
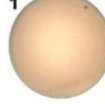
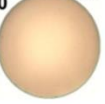
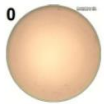
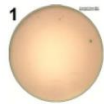
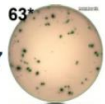
CMV\_YQEFF.. (DR)  
161055

CMV\_VTEH..(A\*01)  
164103

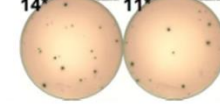
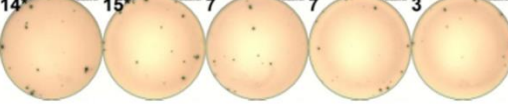
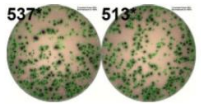
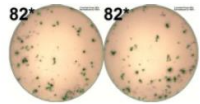
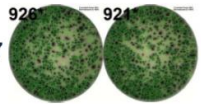
CMV\_ELRRK..(B\*08)  
121173

CMV\_YSEHP.. (A\*01)  
154276

07-02-2017



Vaccination  
29-02-2017  
27-03-2017

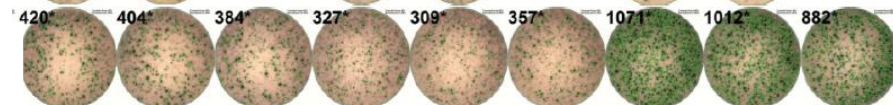
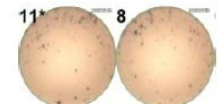
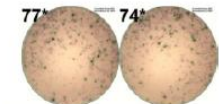
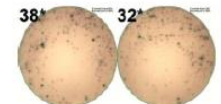


after 12d in vitro restimulation

CMV\_VTEH..(A\*01)  
164103

CMV\_ELRRK..(B\*08)  
121173

CMV\_YSEHP.. (A\*01)  
154276



Patient with MDS (Myelodysplastic syndrome), 14 validated mutations

1st vaccination Dec 16, 2015, peptides i.d. with Aldara topical.  
8th vaccination Feb 19, 2016, peptides i.d. with Aldara topical.

|                              |                               |
|------------------------------|-------------------------------|
| LEKFLQ <b>N</b> HSHLFFPL     | mut GREB1 H1820N DR*01/B*1501 |
| TEVVRRC <b>P</b> HYERCSDSDGL | mut TP53 H179Y elongated A*03 |

no response



Patient with MDS (Myelodysplastic syndrome), 14 validated mutations

1x peptides, XS15, Montanide

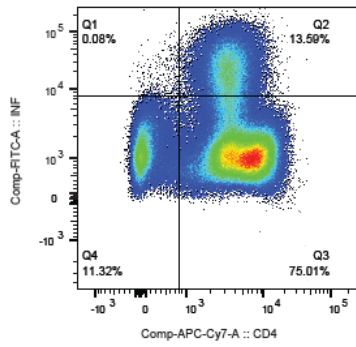
07.05.17

ICS 05.07.17, 12d

## Vaccine cocktail

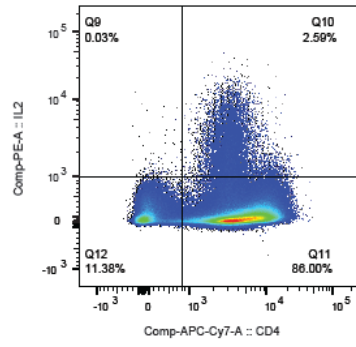
|                              |  | pre vaccine response | post vaccine response |
|------------------------------|--|----------------------|-----------------------|
| LEKFLQ <b>N</b> HSHLFFPL     | mut GREB1 H1820N<br>DR*01/B*1501               | -                    | <b>++</b>             |
| TEVRRCPHY <b>Y</b> ERCSDSDGL | mut TP53 H179Y<br>elongated A*03               | -                    | -                     |
|                              |  |                      |                       |
| KLLPENNVLSPLPSQAMDDL         | p53 wt   | NT                   | <b>++</b>             |
| FRLGFLHSGTAKSVT              | p53 wt   | NT                   | <b>++</b>             |
| MAIYKQSQHMTEVVRR             | p53 wt   | NT                   | -                     |
| TAKSVTCTYSPALNKMF            | p53 wt   | NT                   | <b>+</b>              |
|                              |  |                      |                       |
| TLGEFLKLDREKAKN              | Survivin                                       | NT                   | <b>++</b>             |
|                              |  |                      |                       |
| KTSLYNLRRGTALA               | EBV EBNA1 class II, no<br>preexisting response | -                    | <b>+++</b>            |

INFg



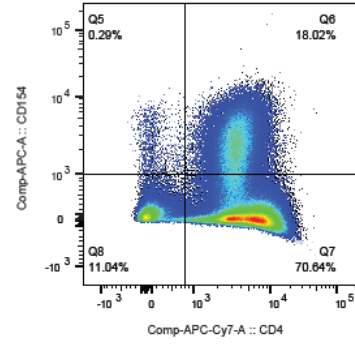
pool2\_9.fcs  
CD8-  
432296.00

IL2



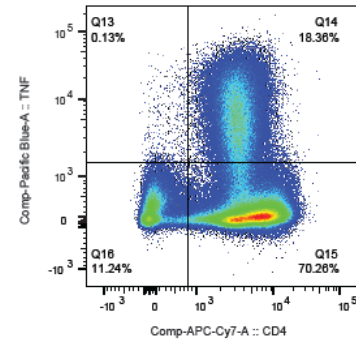
pool2\_9.fcs  
CD8-  
432296.00

CD154



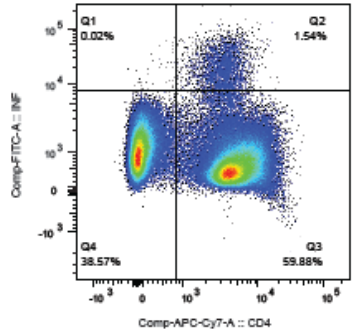
pool2\_9.fcs  
CD8-  
432296.00

TNF

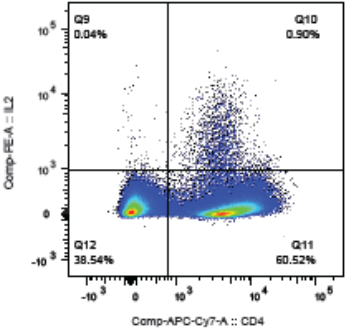


pool2\_9.fcs  
CD8-  
432296.00

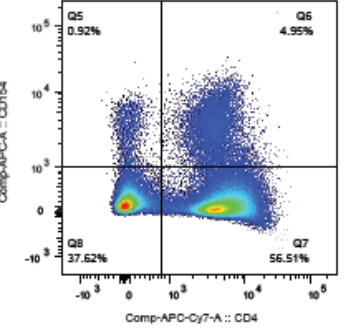
EBV  
EBNA1  
KTS



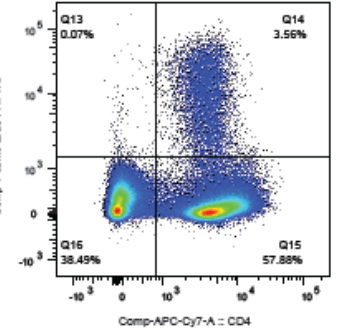
pool1\_1.fcs  
CD8-  
234236.00



pool1\_1.fcs  
CD8-  
234236.00

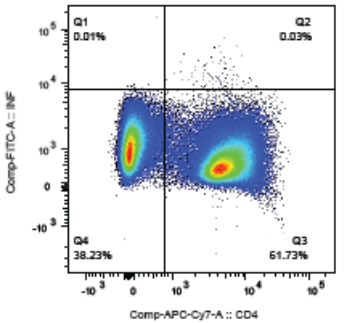


pool1\_1.fcs  
CD8-  
234236.00

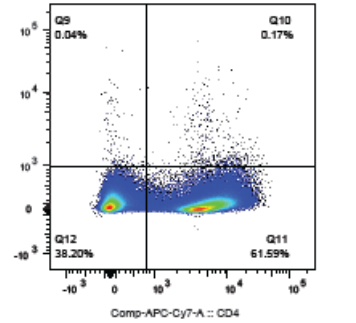


pool1\_1.fcs  
CD8-  
234236.00

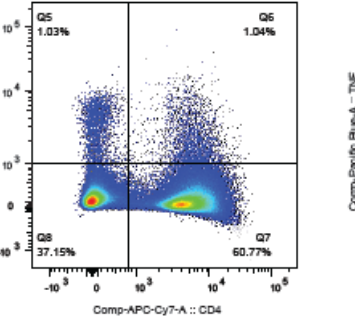
GREB1  
mut  
LEK



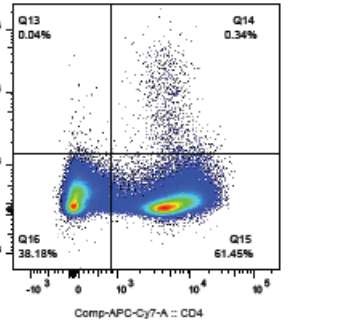
pool1\_2.fcs  
CD8-  
299970.00



pool1\_2.fcs  
CD8-  
299970.00



pool1\_2.fcs  
CD8-  
299970.00



pool1\_2.fcs  
CD8-  
299970.00

TP53mut  
TEVV

## Conclusions:

1. XS15 is a watersoluble TLR2 ligand inducing a strong CD8 and Th1CD4 response against free short peptides in Montanide ISA51 after a single s.c. injection
2. Vaccine peptides persist at the injection site at least for 7 weeks
3. Vaccine induced response persists for > 1 year
4. Works for viral, mutated, and non-mutated self peptides

# **A new synthetic lipopeptide is an efficient adjuvant for one shot peptide vaccination**

Karl-Heinz Wiesmüller

Heiko Schuster

Anoop Chandra

Henning Zelba

Cécile Gouttefangeas

Stefan Stevanović

Sebastian Haen

Markus Löffler

Daniel Kowalewski

Moreno Di Marco

Linus Backert

Johannes Schwenk

Christian la Fougère

Bernd Pichler

Manfred Kneilling

Gisela Metzler

Jürgen Bauer

Reinhild Klein

Benni Weide

Wilfried Schippert

Karolin Laske

Kerstin Artzner

# Acknowledgments



EBERHARD KARLS  
UNIVERSITÄT  
TÜBINGEN



*Applied  
Bioinformatics*



*Philipp Wagner  
Anette Staebler  
Juliane Walz  
Sebastian Haen*

*Markus Löffler  
Hans Bösmüller  
Falko Fend*

*Lothar Kanz  
Helmut Salih  
Benjamin Weide  
Arnulf Stenzl*

*Jens Bedke  
Jörg Hennenlotter  
Olaf Riess  
Peter Bauer  
Michael Bonin  
Christopher Schröder*

*Stefan Stevanović  
Cécile Gouttefangeas*

*Juliane Walz  
Markus Löffler  
Sebastian Haen*

*Heiko Schuster  
Janet Peper*

*Daniel Kowalewski  
Nico Trautwein*

*Mathias Walzer  
Armin Rabsteyn*

*Lea Prokop  
Steffi Souczek*

*Karo Laske  
Maren Luebke*

*Simon Walz  
Claudia Berlin*

*Chris Hotz  
Linus Backert*

*Patricia Hrstic  
Nicole Zuschke*

*Simon Walz*

Claudia Berlin  
Henning Zelba  
Anoop Chandran  
Stefan Kahn  
Armin Rabsteyn  
Nico Trautwein  
Theo Sturm  
Mathias Walzer  
Ana Marcu  
Leon Bichmann  
Lena Freudenmann  
Marian Neidert  
Michael Gosh

Oliver Kohlbacher

**Department of  
Neurosurgery, University  
Hospital Zurich**

Marian Neidert

Support: SFB 685, GK 794, BMBF, EU,  
Krebshilfe, fortune, AKF, DKTK, DKFZ, ERC,  
Jung-Stiftung



# Future of tumor vaccination

## **Active immunotherapy with individually selected peptides**

with strong adjuvant (e.g., the TLR2 ligand XS15) in a water-in-oil or other subcutaneous depot could advance the field, in particular in the MRD setting

**In patients with tumor load** checkpoint inhibition after induction of vaccine specific T cell responses should be considered





# *The awesome landscape of tumor antigens beyond mutated neoantigens*

mutated neoantigens

shared nonmutated antigens (incl. viral)

private non mutated antigens (incl. posttranslational modifications)

